



PROJECT NUMBER: 3ie TW4/1010

**TITLE: IMPROVING FOOD SECURITY THROUGH THE
INTRODUCTION OF NEW SEED VARIETIES**

**SUB-TITLE: WHICH MODALITIES ARE MOST COST-EFFECTIVE
IN PROMOTING USE OF NEW SEED VARIETIES?**

PICTORIAL FIELD REPORT OF THE MIDLINE SURVEYS

June, 2016

Principal Investigators:

Dr. Mercy W. Kamau (Lead), mkamau@tegemeo.org

Dr. Fred Bagamba, fbagamba@caes.mak.ac.ug

Research Assistants:

Robert Otundo, John Mburu, Ms. Claris Riungu

Project ieTW4/1010: Study Sites in Uganda

A Graphic Representation of the Following:

- Districts in Uganda that are included in the study
- The randomly selected sub-counties (16 in total)
- Sub-counties allocated to treatment and control groups
- The location of randomly selected households
- The location of demonstration plots by Pearl Seed Ltd (U)
- Location of venues for Focus Group Discussions (FGDs)
- Location of Agro-dealer stores
- Location of radio stations which aired promotions on selected seed varieties and talk shows by Pearl Seed Company
- Distance (km) of the farthest farmer (using the nearest motorable road)
 - to the demonstration plots
 - to the Agro-dealer store

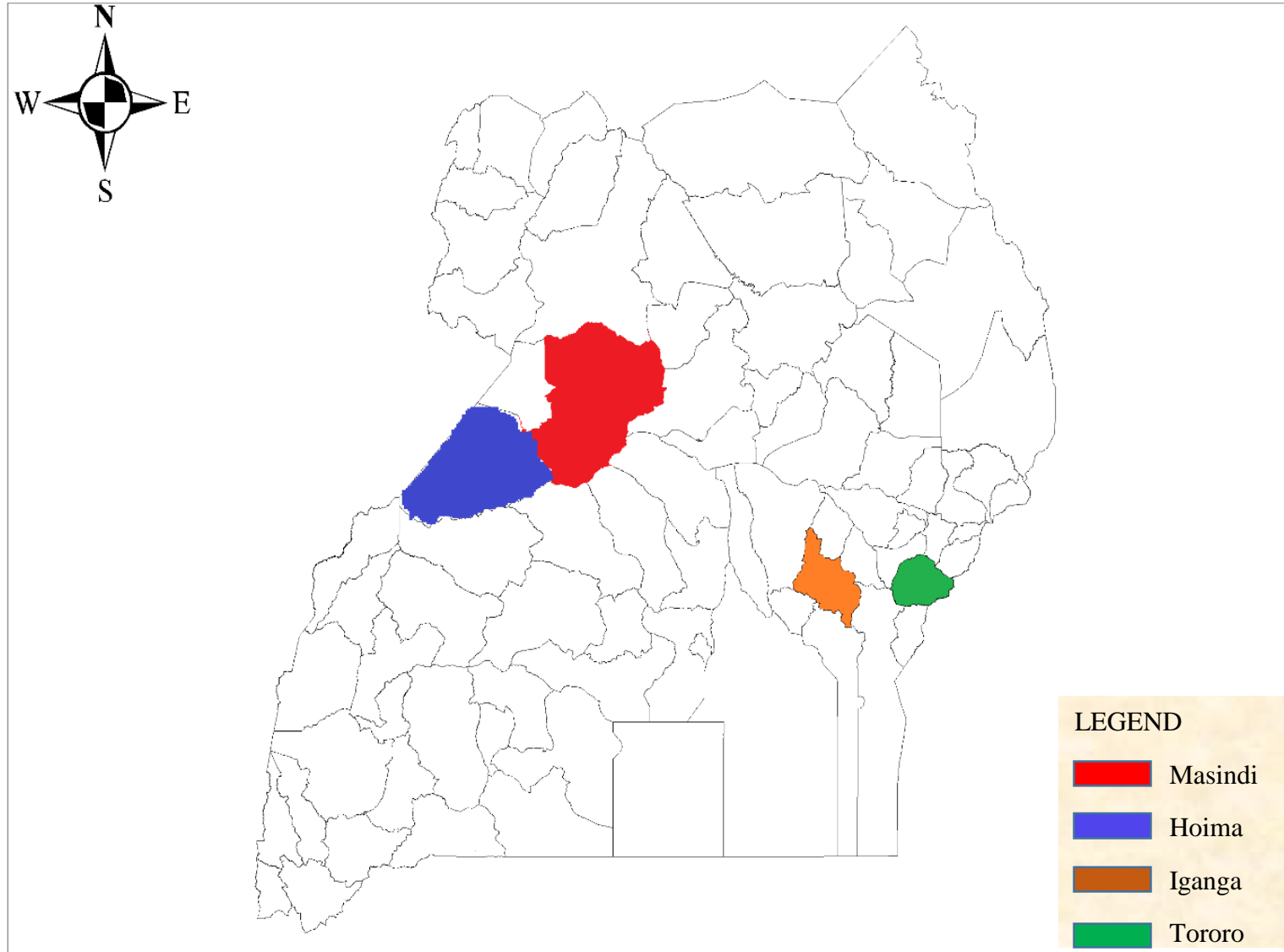
UGANDA IN AFRICA MAP



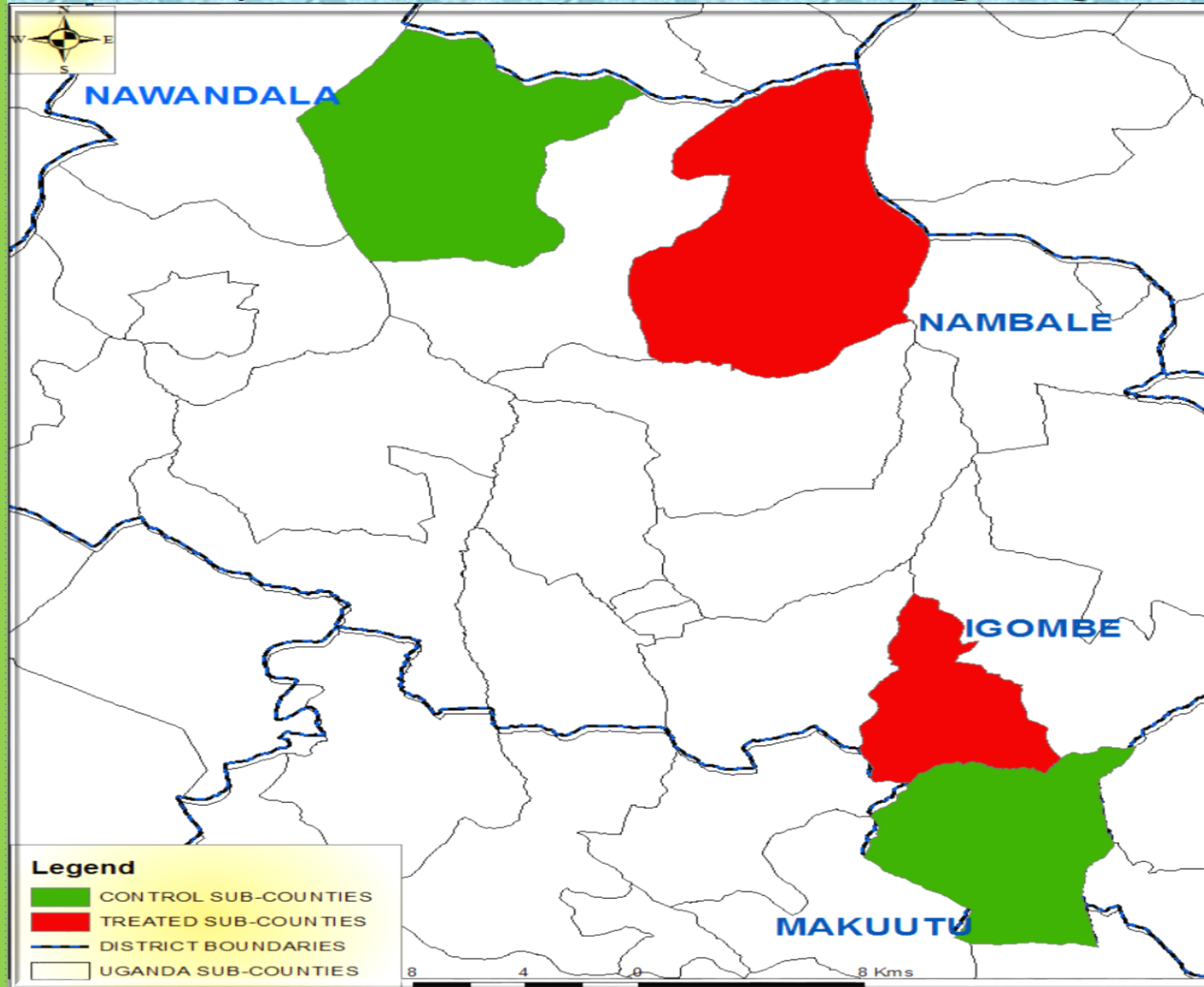
MAP OF UGANDA



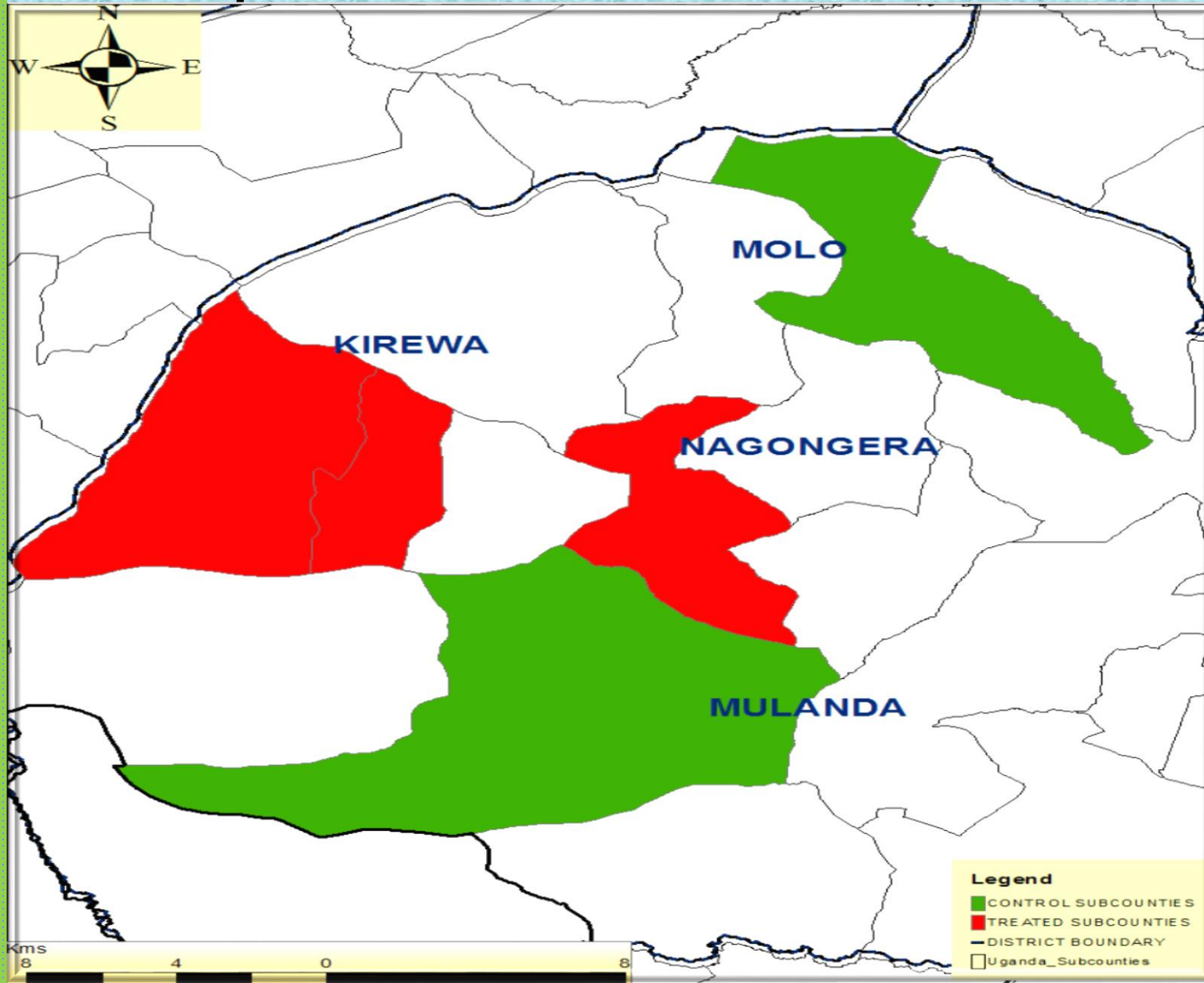
Study Districts in Uganda



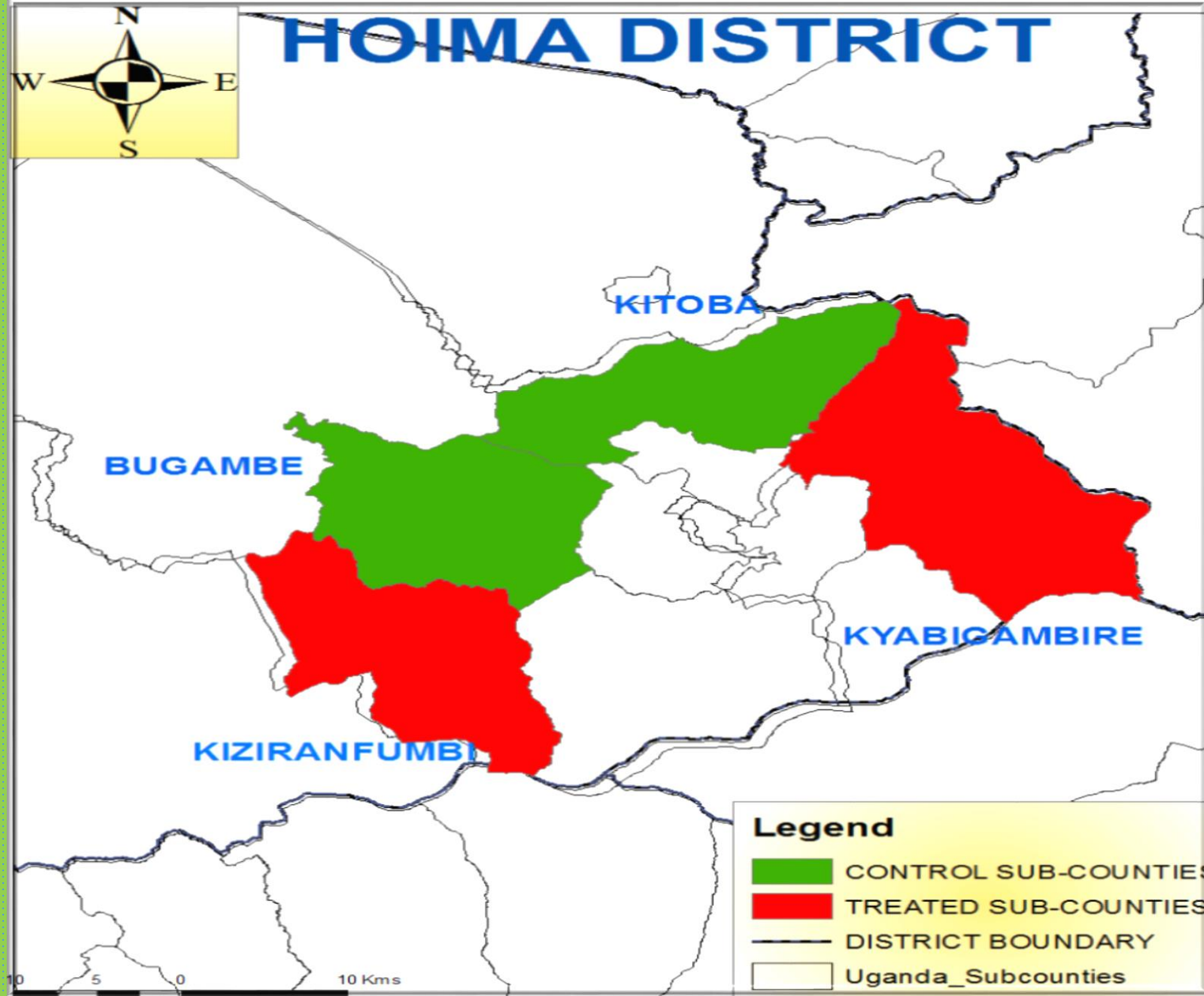
Sampled Sub-counties in Iganga



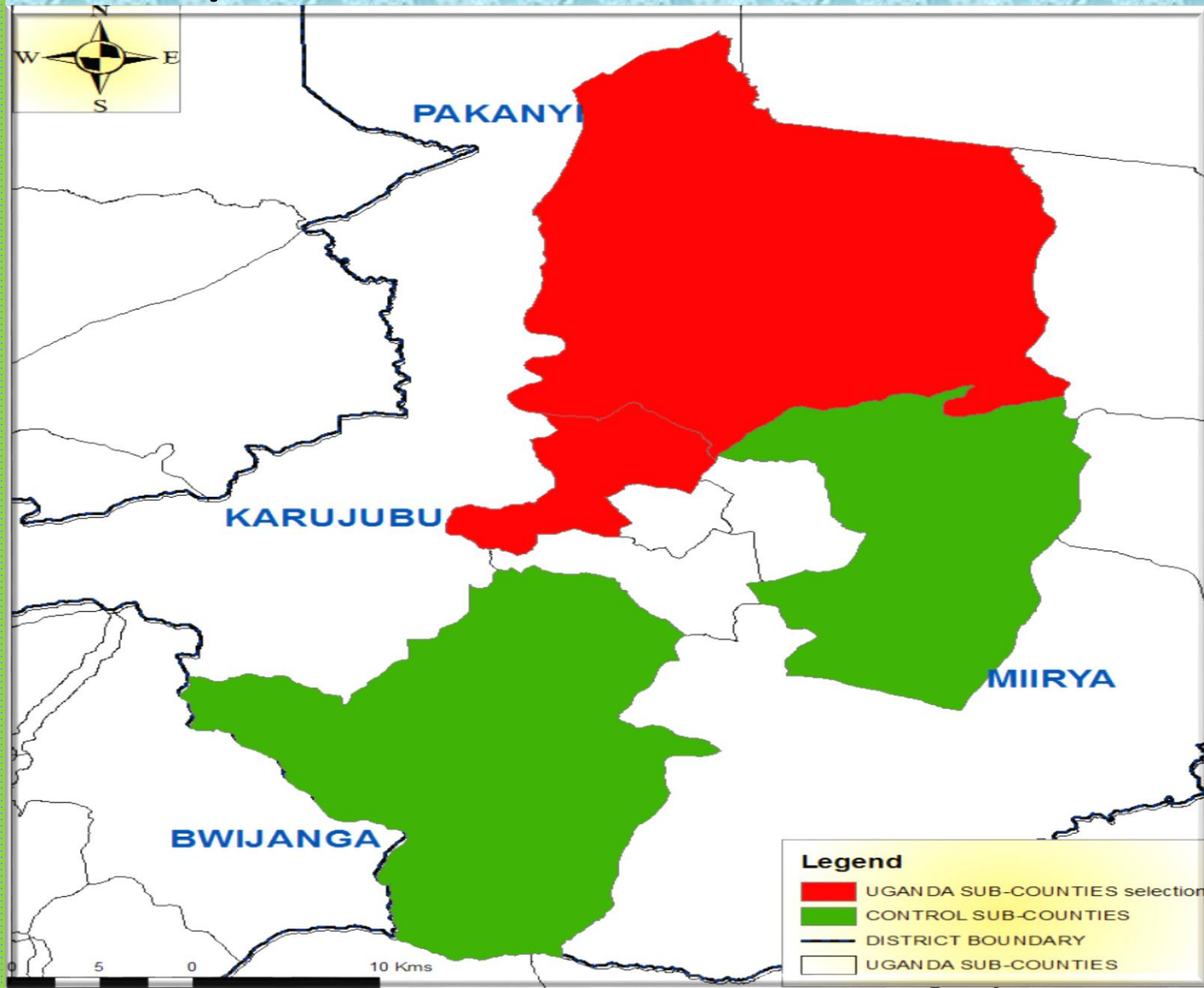
Sampled Sub-counties in Tororo

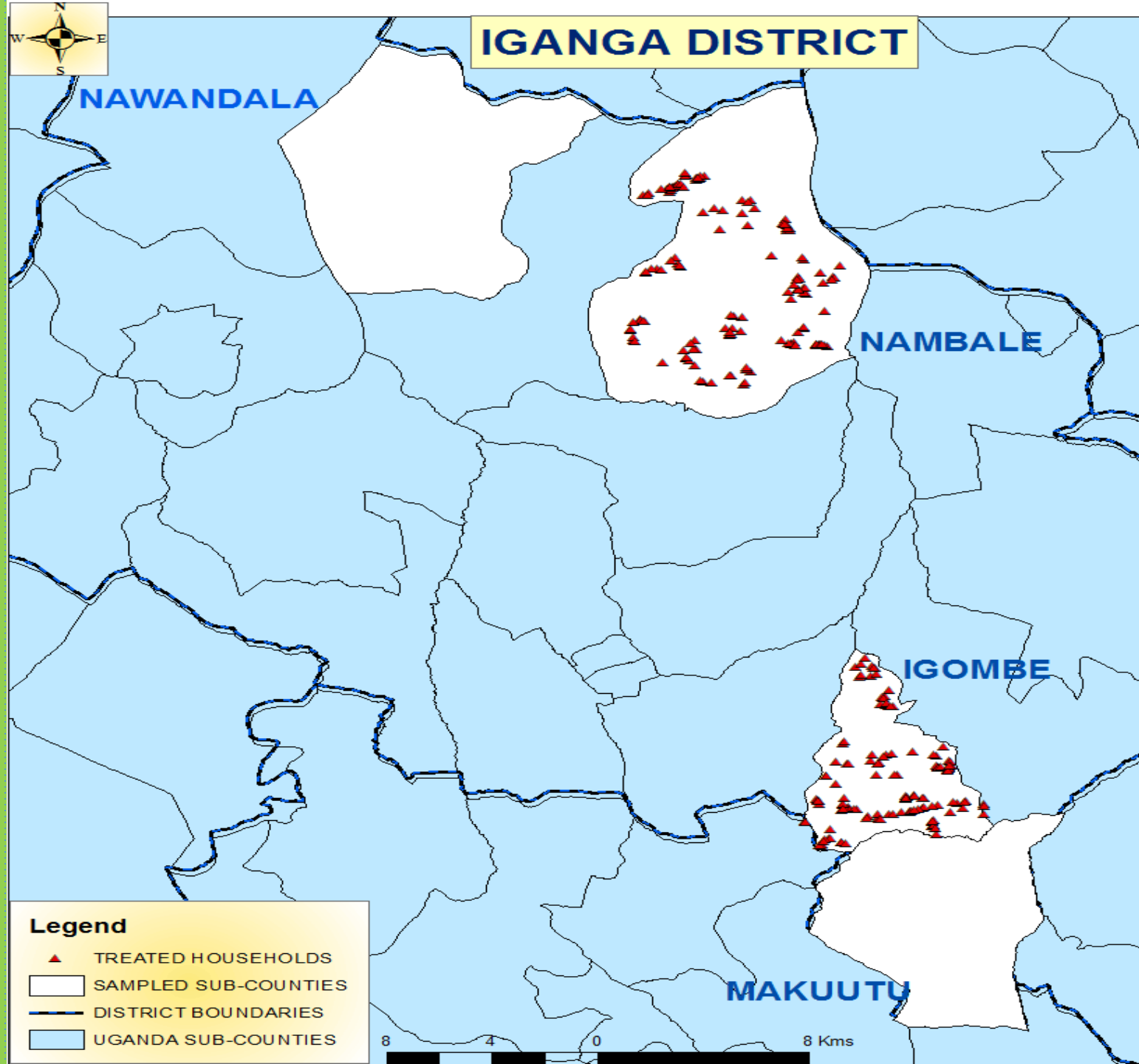


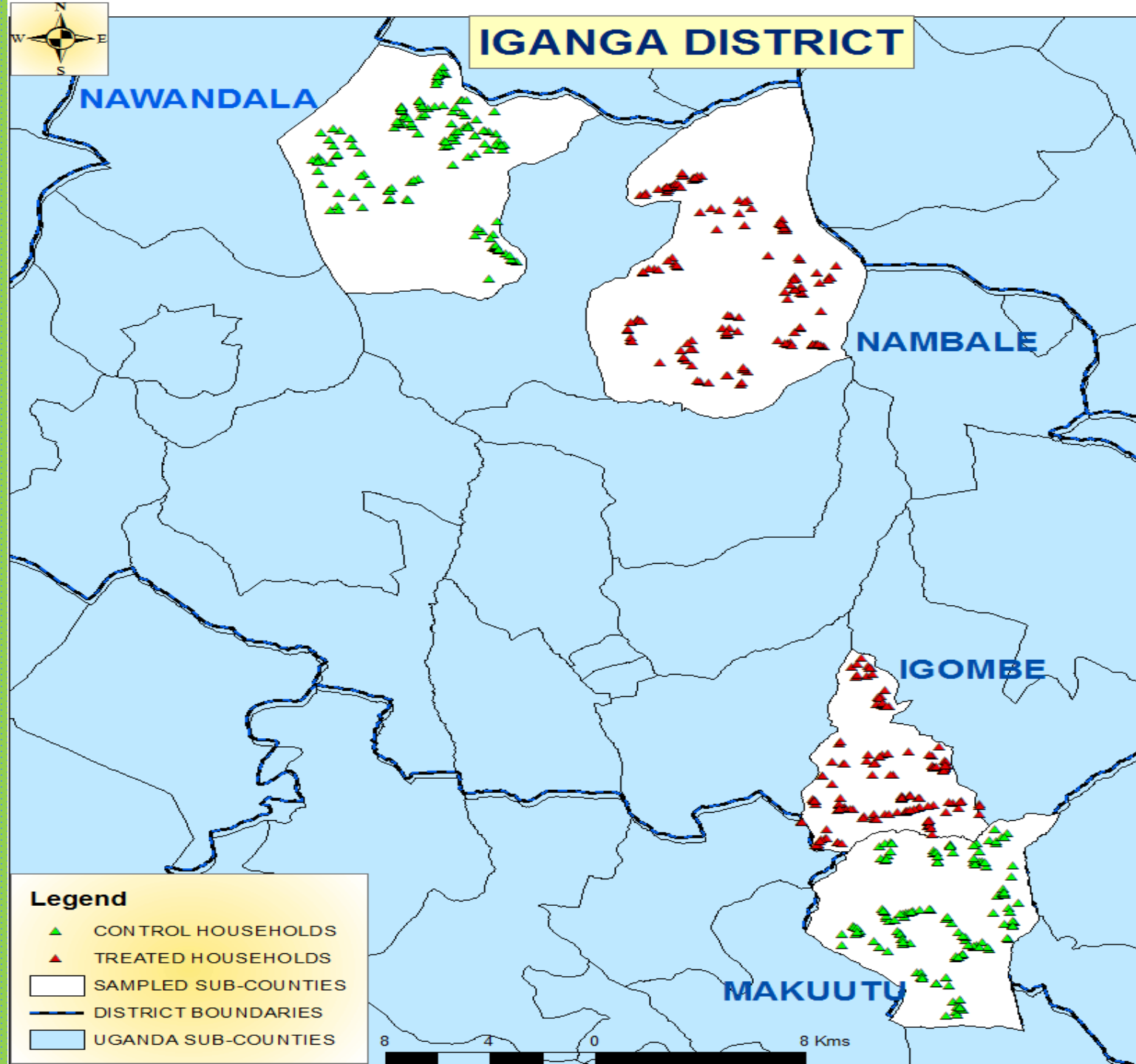
Sampled Sub-counties in Hoima



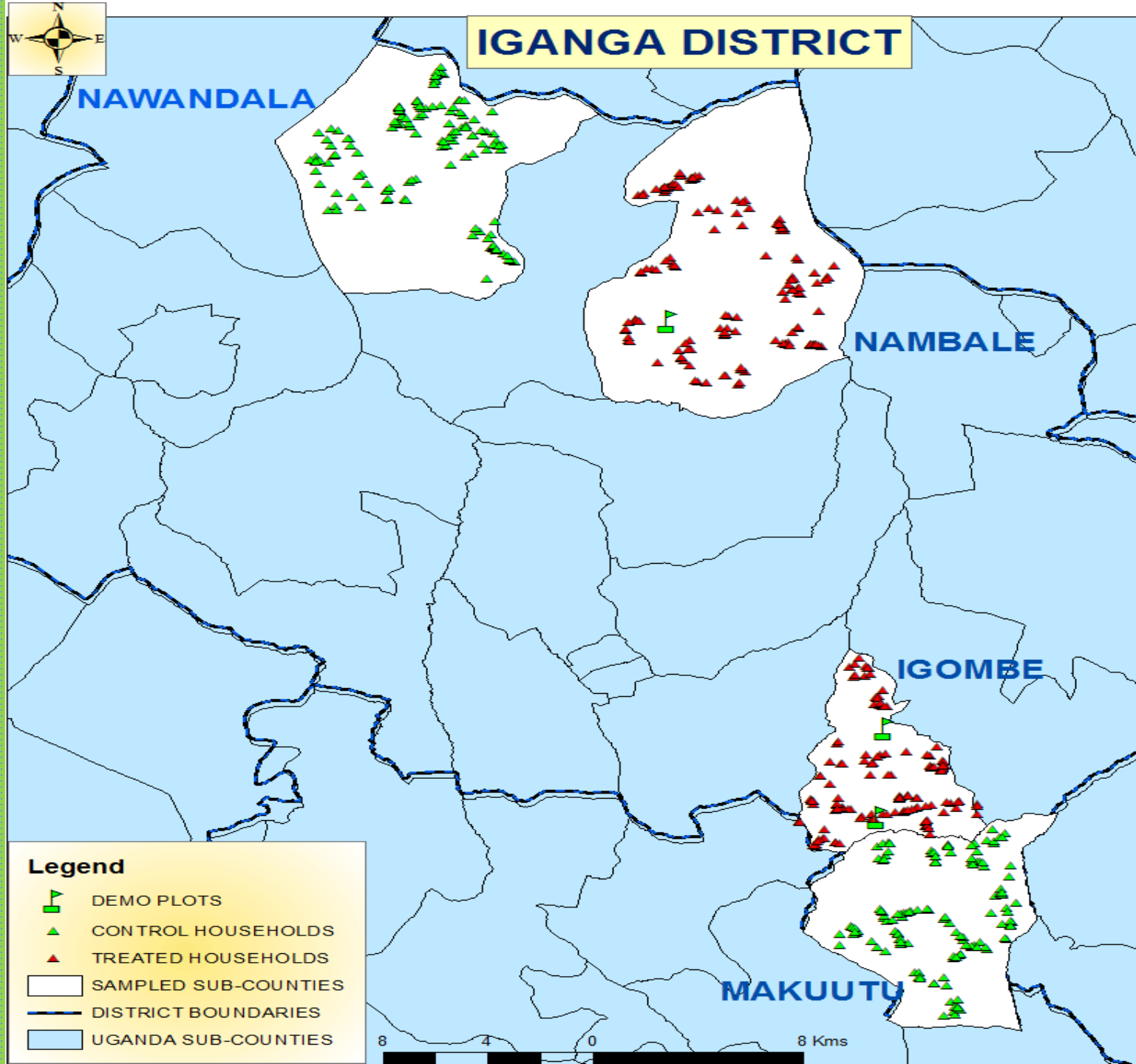
Sampled Sub-counties in Masindi



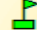









IGANGA DISTRICT

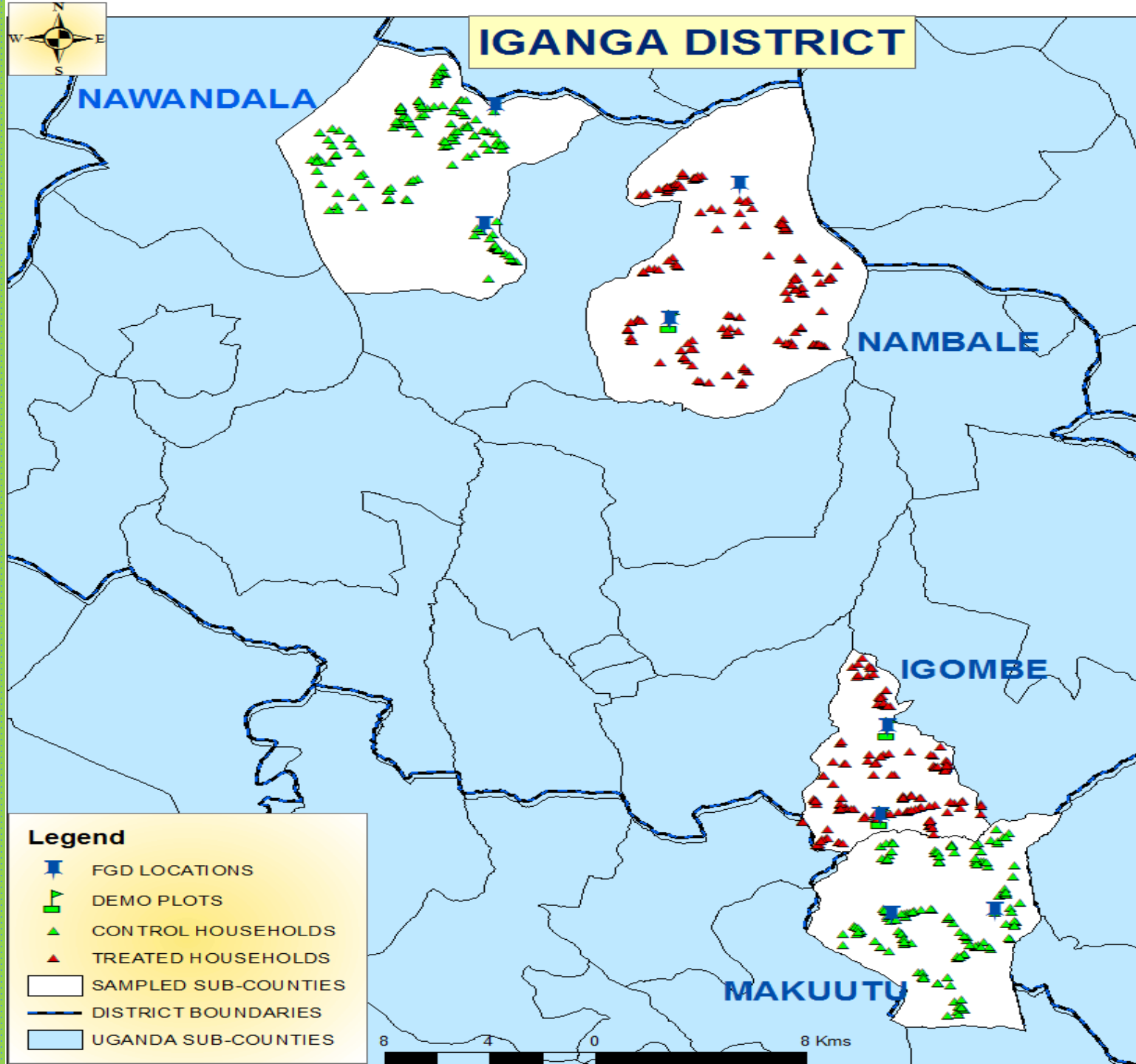


Legend

-  DEMO PLOTS
-  CONTROL HOUSEHOLDS
-  TREATED HOUSEHOLDS
-  SAMPLED SUB-COUNTIES
-  DISTRICT BOUNDARIES
-  UGANDA SUB-COUNTIES

8 4 0 8 Kms

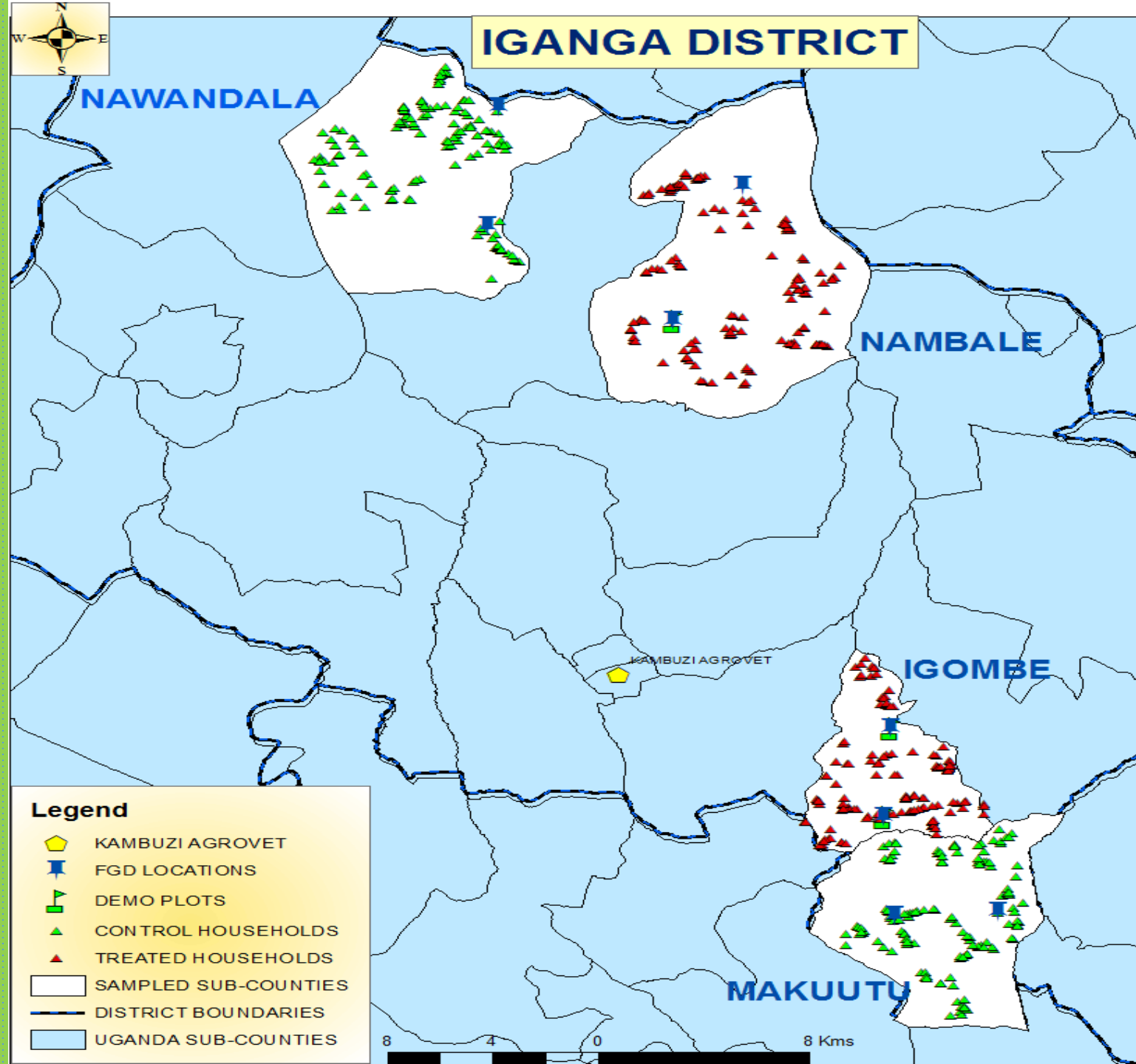
IGANGA DISTRICT

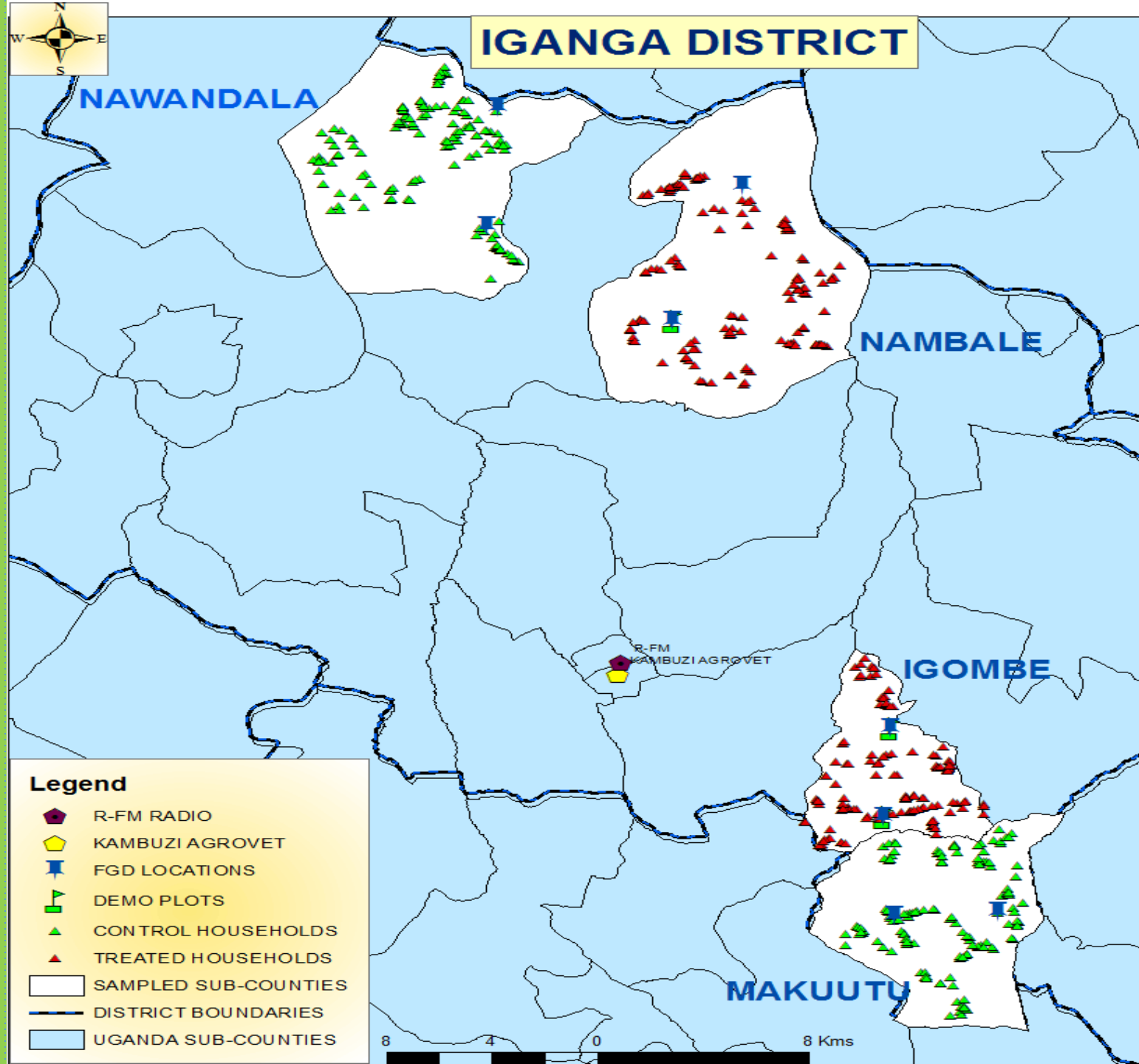


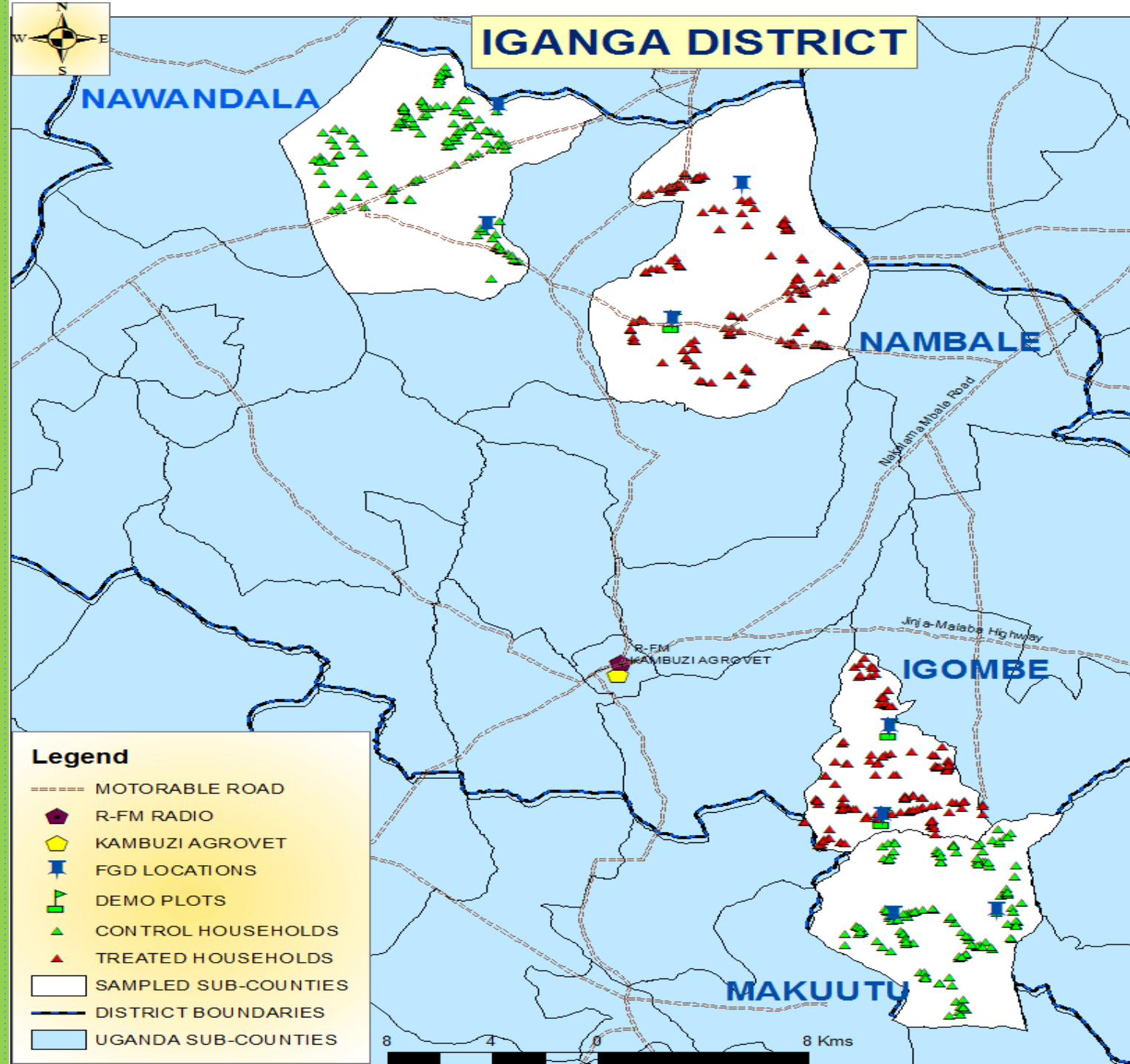
Legend

- FGD LOCATIONS
- DEMO PLOTS
- CONTROL HOUSEHOLDS
- TREATED HOUSEHOLDS
- SAMPLED SUB-COUNTIES
- DISTRICT BOUNDARIES
- UGANDA SUB-COUNTIES

8 4 0 8 Kms







Distance (km) from farthest farmer using Motorable road to:

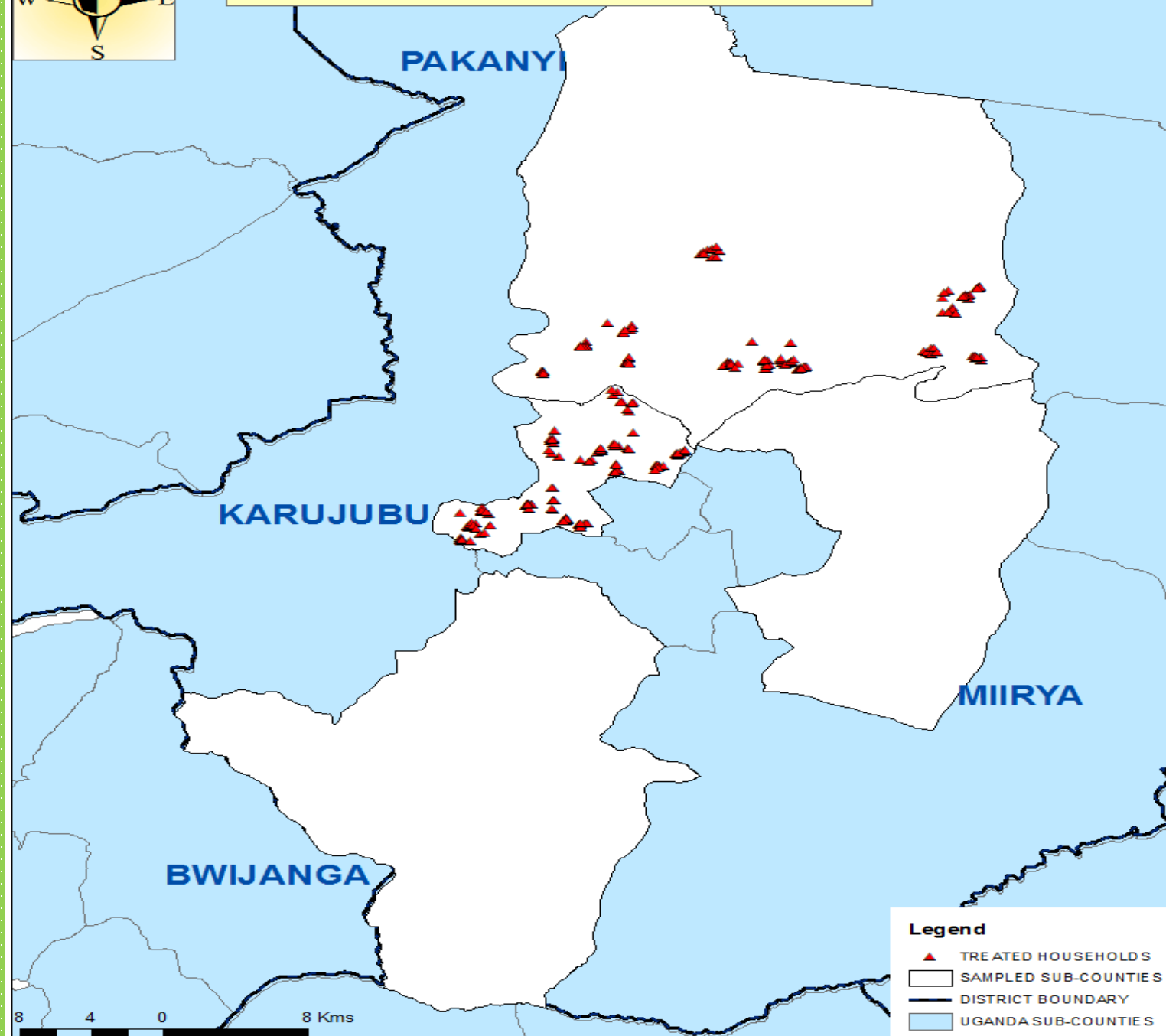
Demoplot:

1. Nawandala= 24.41
2. Nambale= 13.91
3. Igombe= 4.48
4. Makuutu= 10.57

Agrodealer:

1. Nawandala= 42.22
2. Nambale= 30.88
3. Igombe= 17.32
4. Makuutu= 34.58

MASINDI DISTRICT

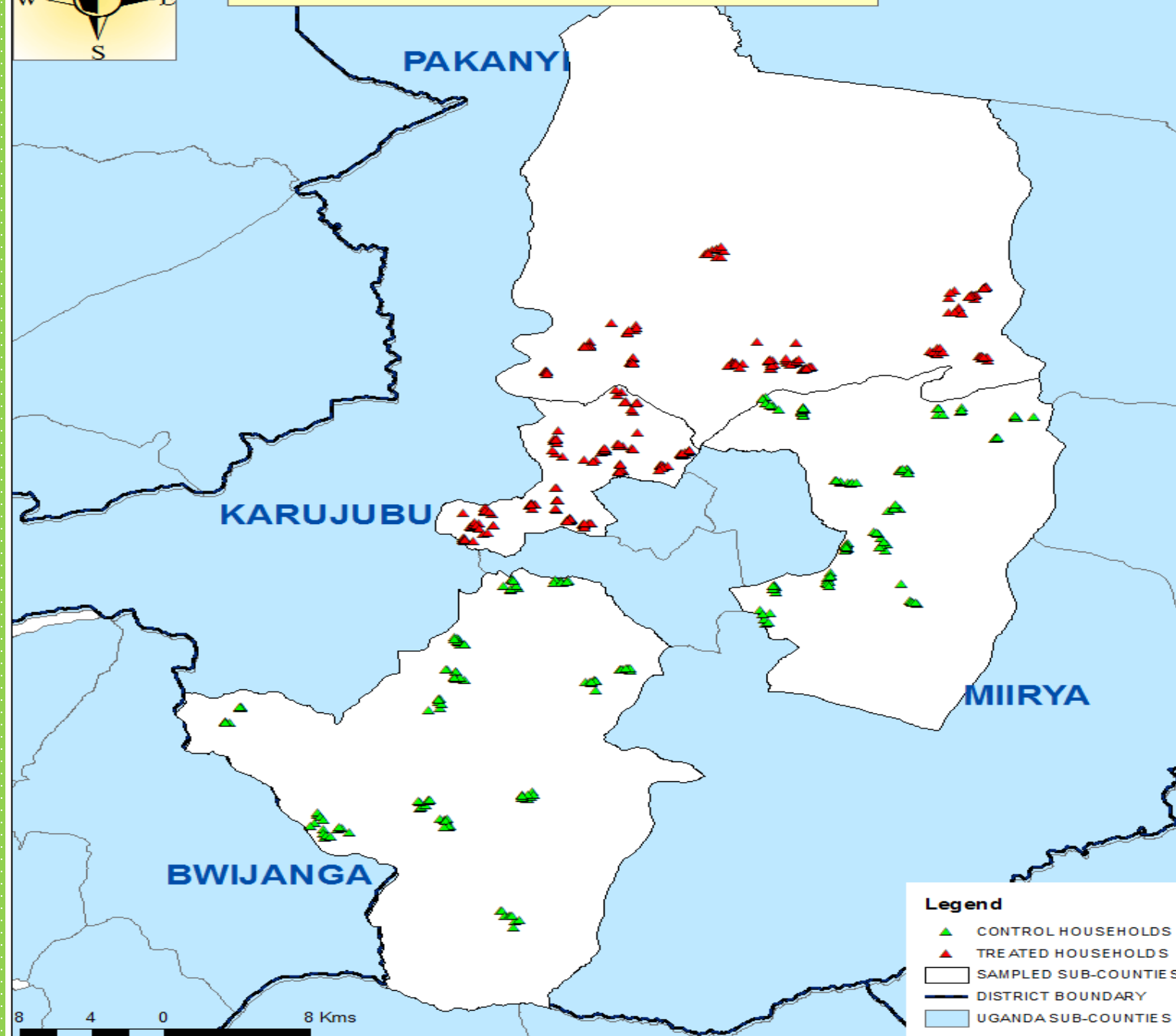


Legend

- ▲ TREATED HOUSEHOLDS
- SAMPLED SUB-COUNTIES
- DISTRICT BOUNDARY
- UGANDA SUB-COUNTIES

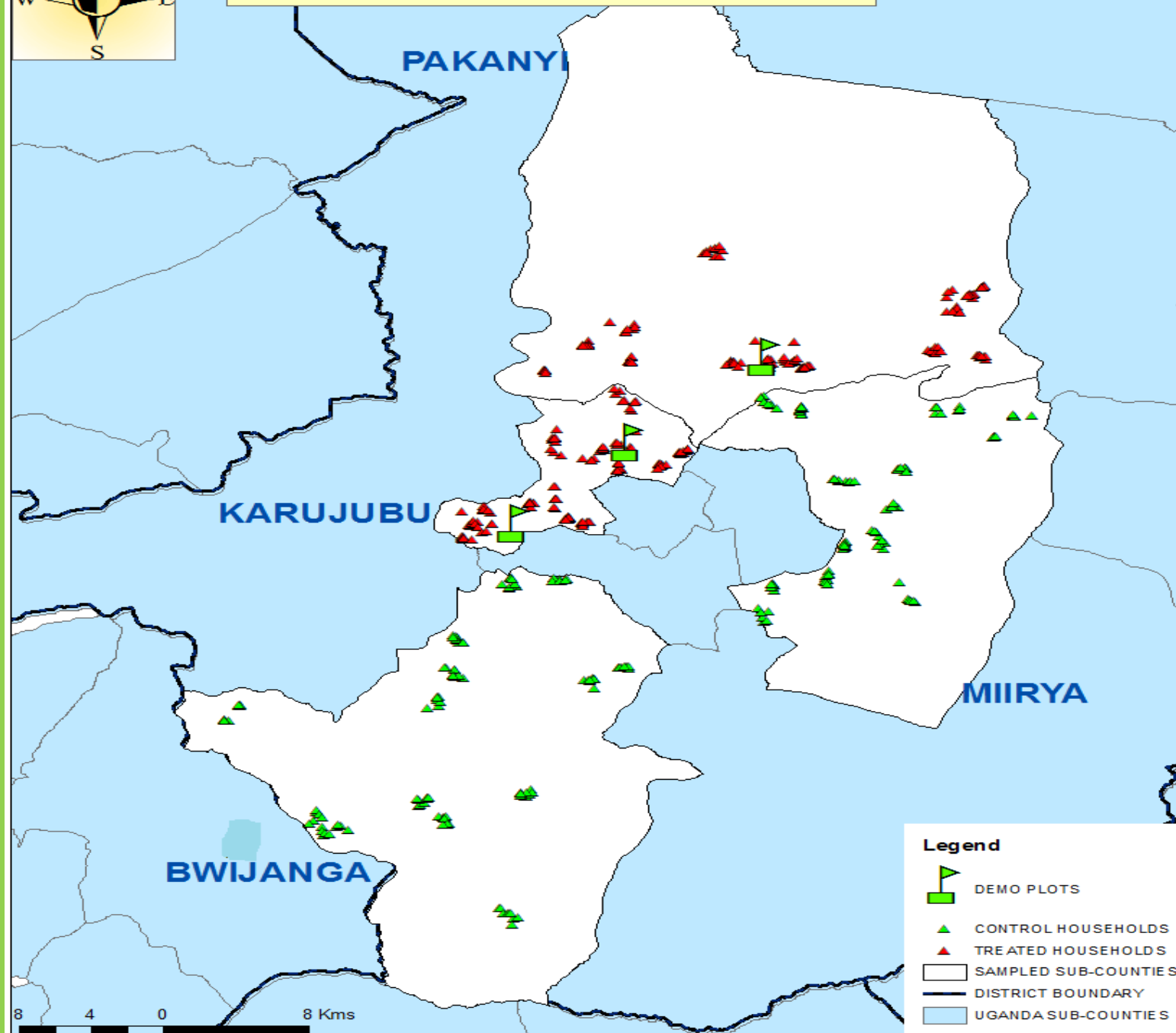
8 4 0 8 Kms

MASINDI DISTRICT



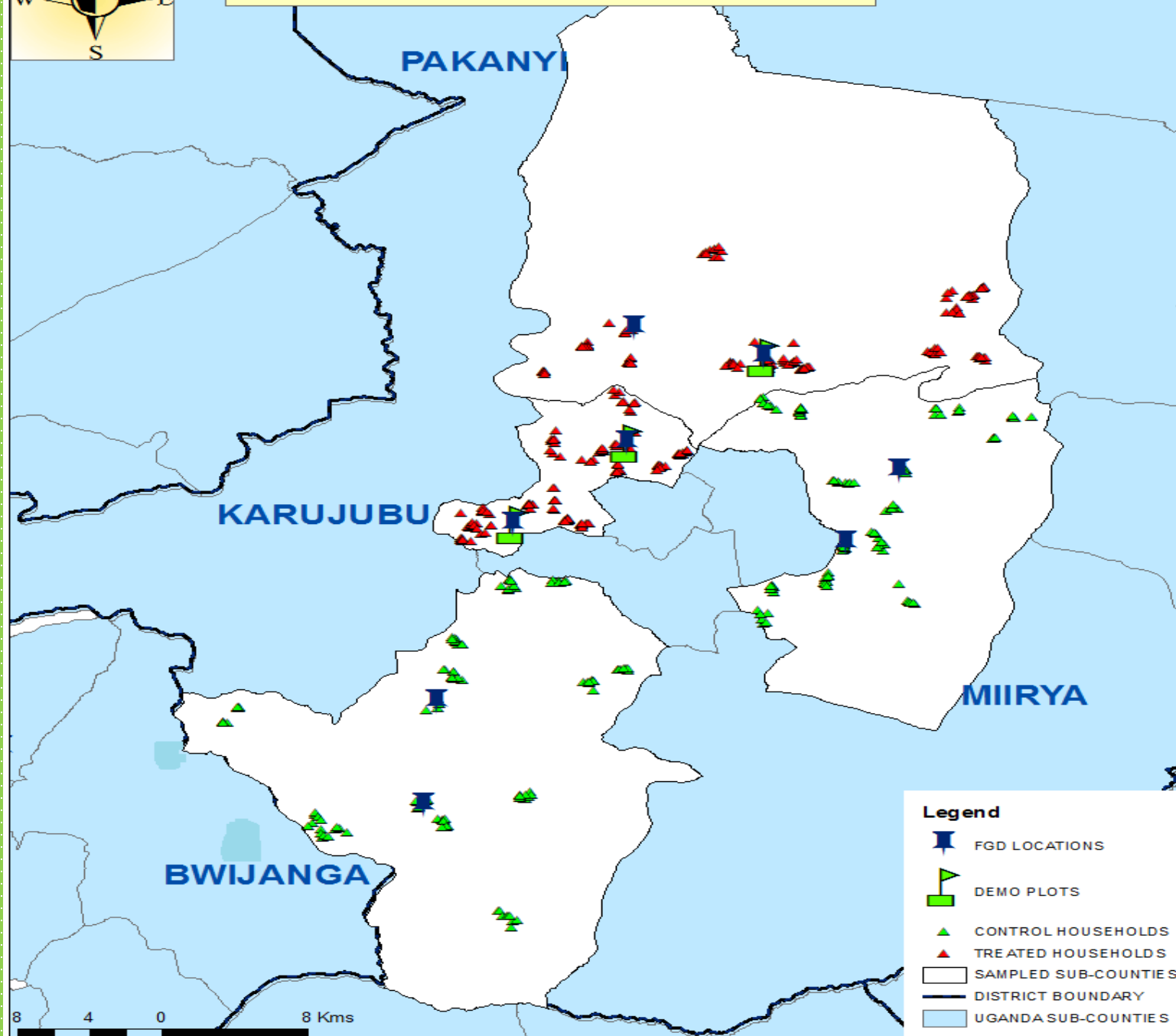
8 4 0 8 Kms

MASINDI DISTRICT



8 4 0 8 Kms

MASINDI DISTRICT

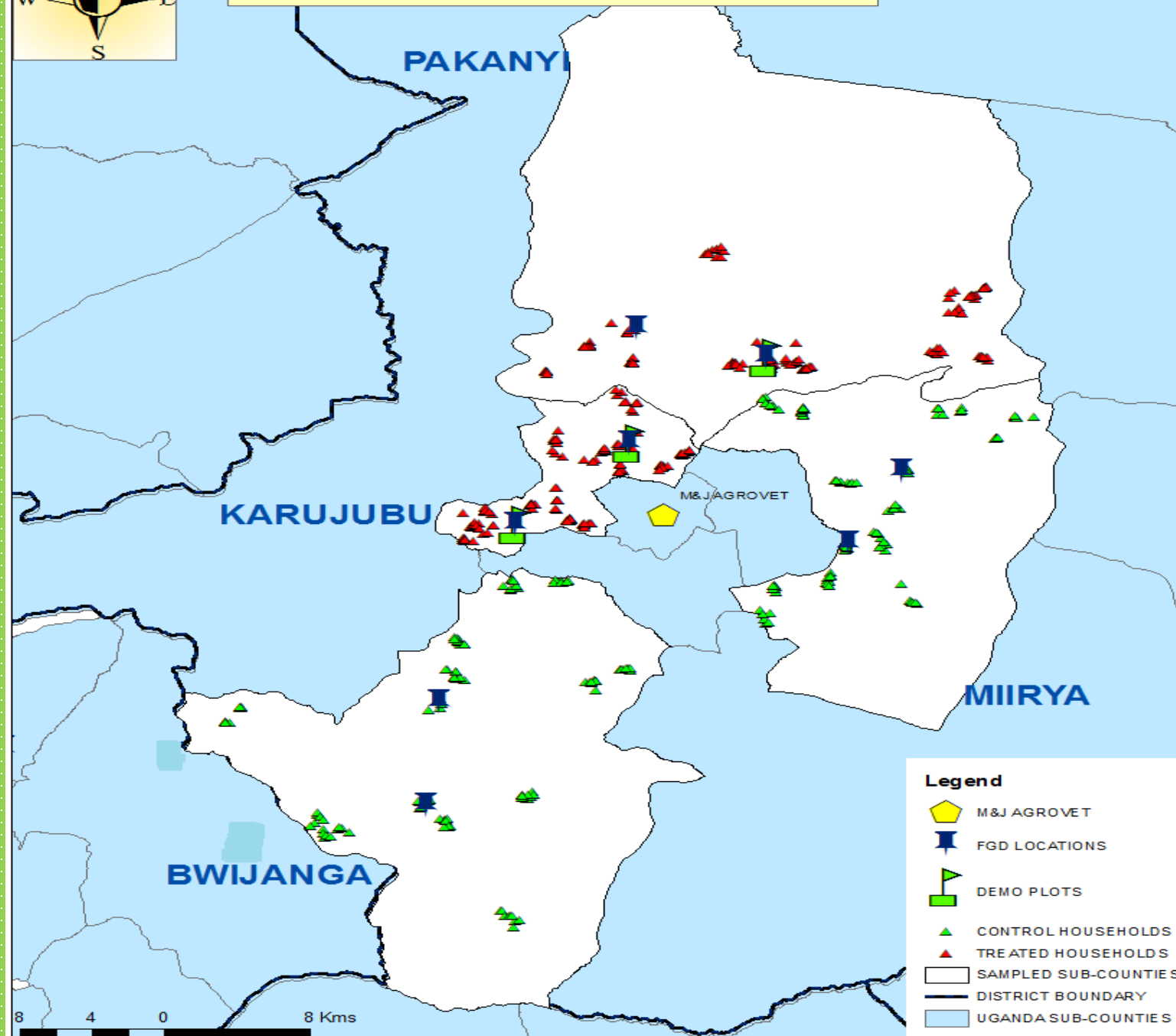


Legend

- FGD LOCATIONS
- DEMO PLOTS
- CONTROL HOUSEHOLDS
- TREATED HOUSEHOLDS
- SAMPLED SUB-COUNTIES
- DISTRICT BOUNDARY
- UGANDA SUB-COUNTIES

8 4 0 8 Kms

MASINDI DISTRICT

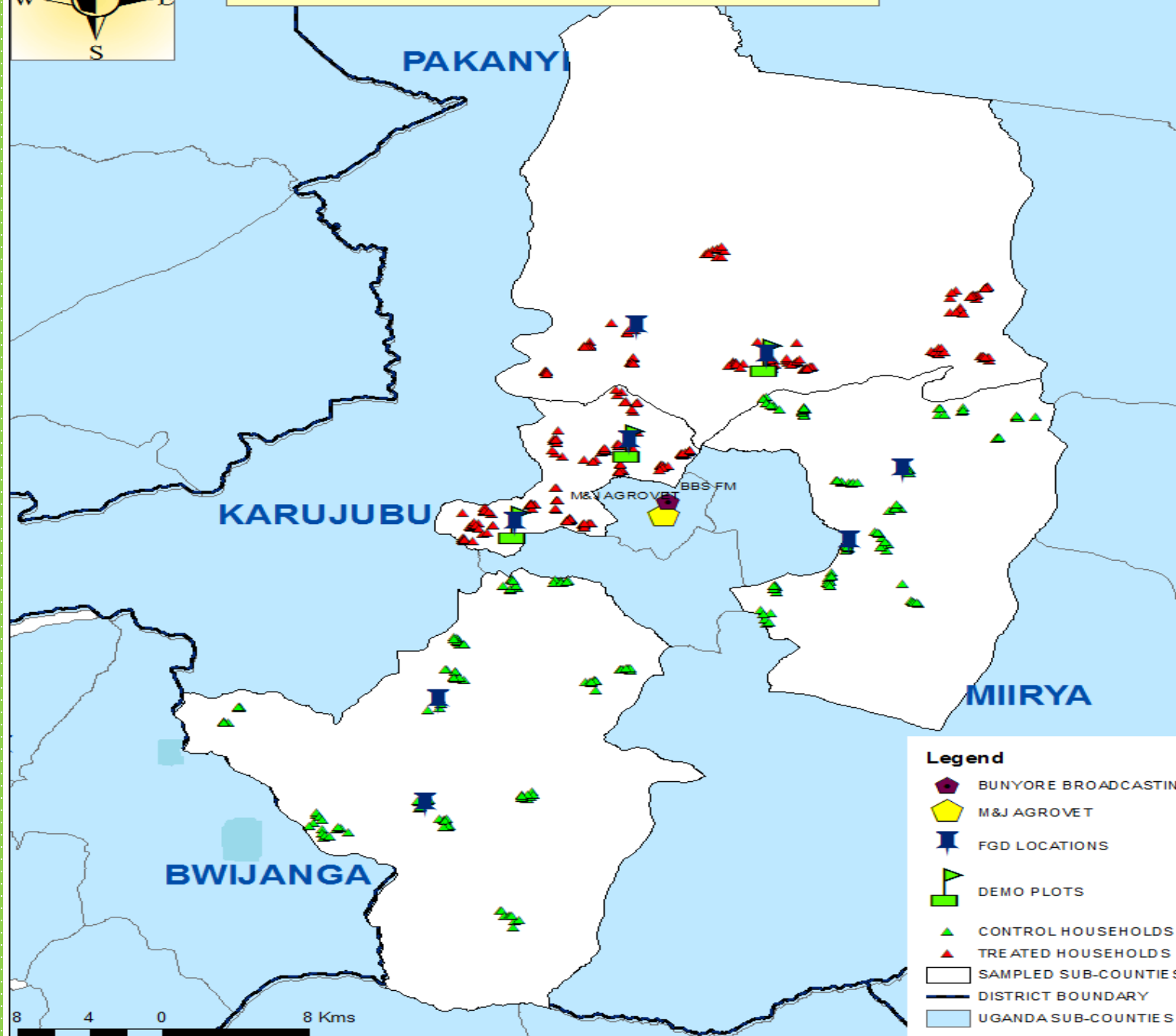


Legend

- M & J AGROVET
- FGD LOCATIONS
- DEMO PLOTS
- CONTROL HOUSEHOLDS
- TREATED HOUSEHOLDS
- SAMPLED SUB-COUNTIES
- DISTRICT BOUNDARY
- UGANDA SUB-COUNTIES

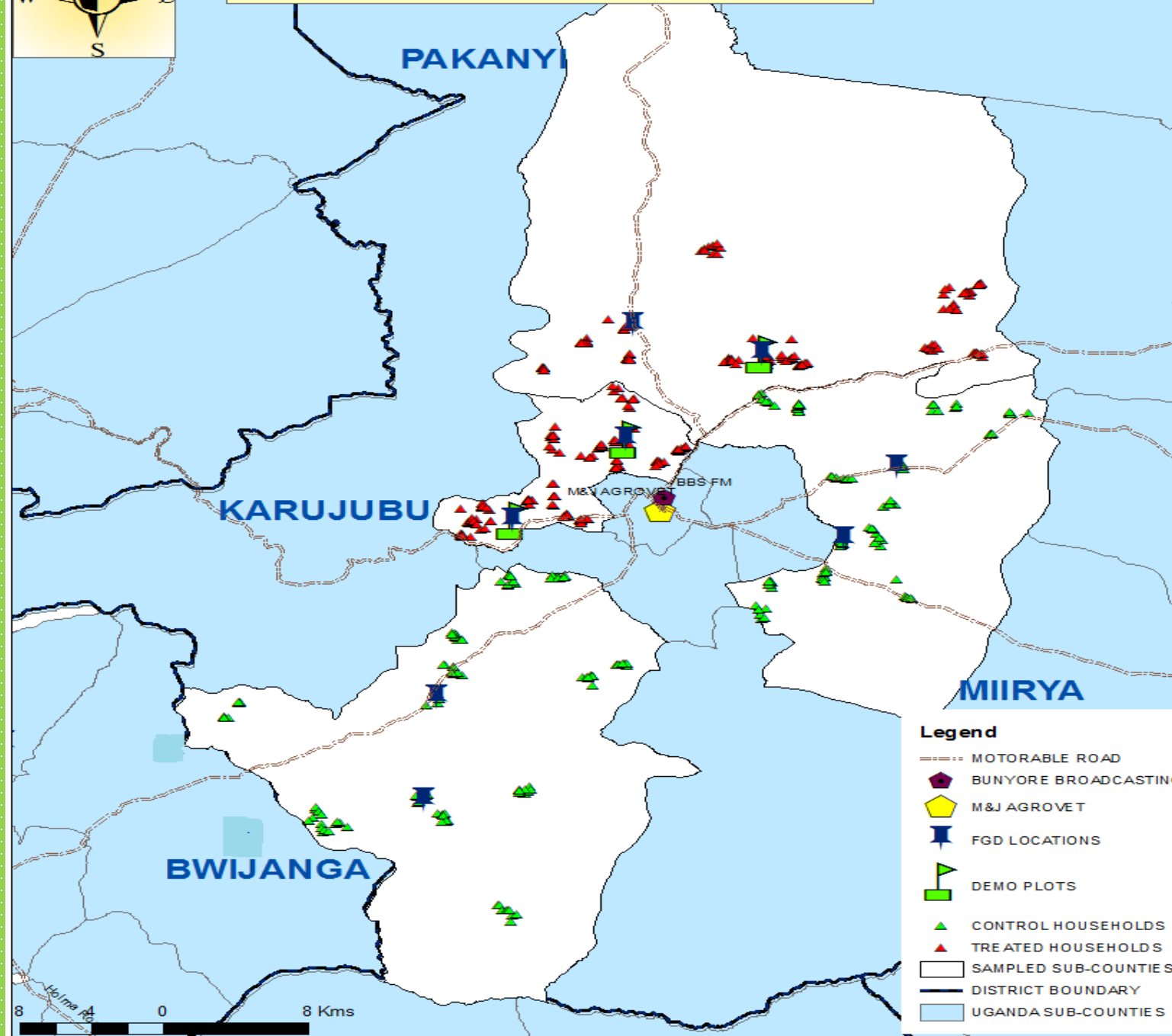
8 4 0 8 Kms

MASINDI DISTRICT



- Legend**
- BUNYORE BROADCASTING
 - M&J AGROVET
 - FGD LOCATIONS
 - DEMO PLOTS
 - CONTROL HOUSEHOLDS
 - TREATED HOUSEHOLDS
 - SAMPLED SUB-COUNTIES
 - DISTRICT BOUNDARY
 - UGANDA SUB-COUNTIES

MASINDI DISTRICT



Distance (km) from farthest farmer using Motorable road to:

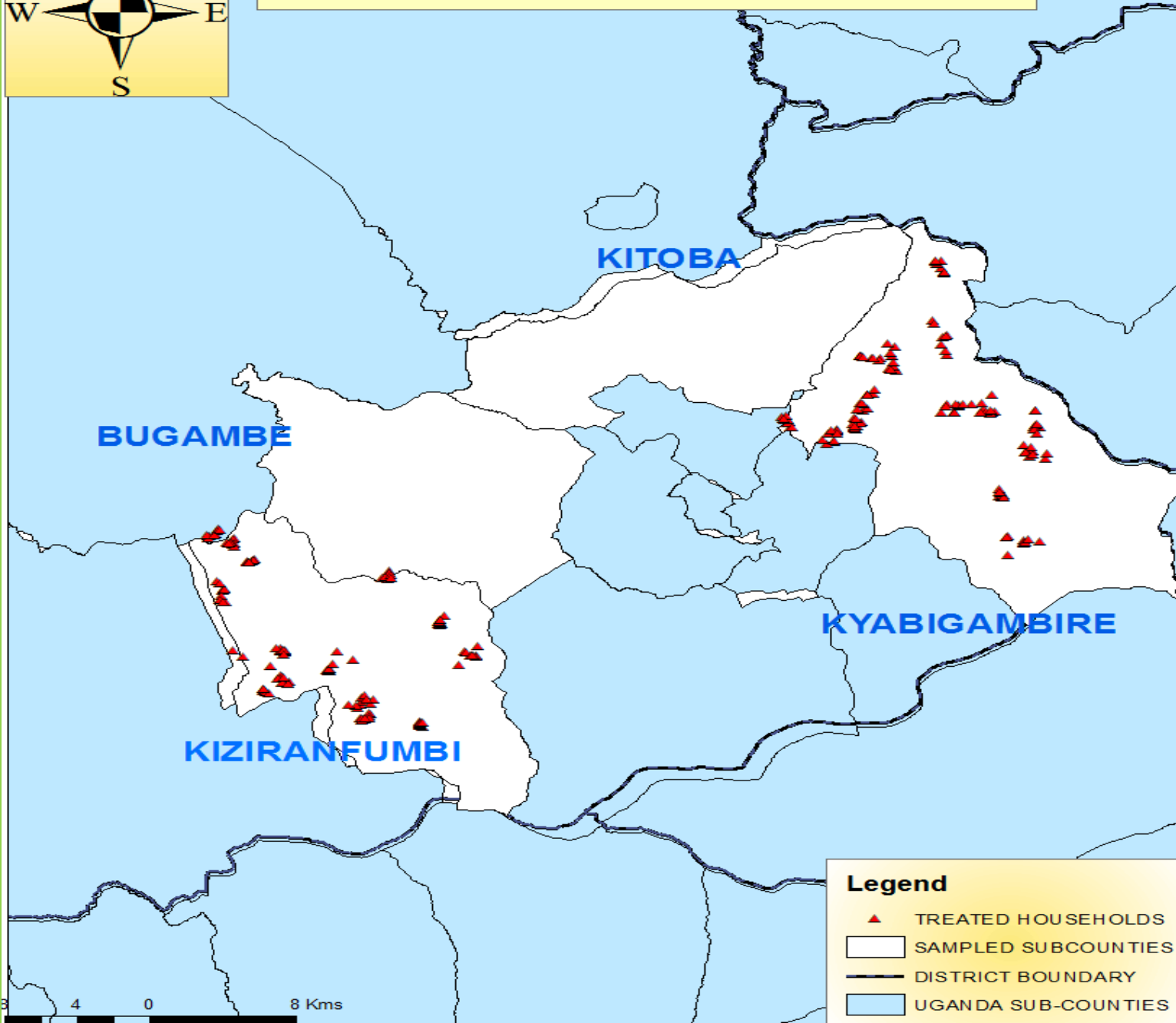
Demoplot:

1. Pakanyii= 18.85
2. Karujubu= 5.47
3. Miirya= 21.12
4. Bwijanga= 39.74

Agrodealer:

1. Pakanyii= 25.32
2. Karujubu= 10.50
3. Miirya= 24.81
4. Bwijanga= 45.62

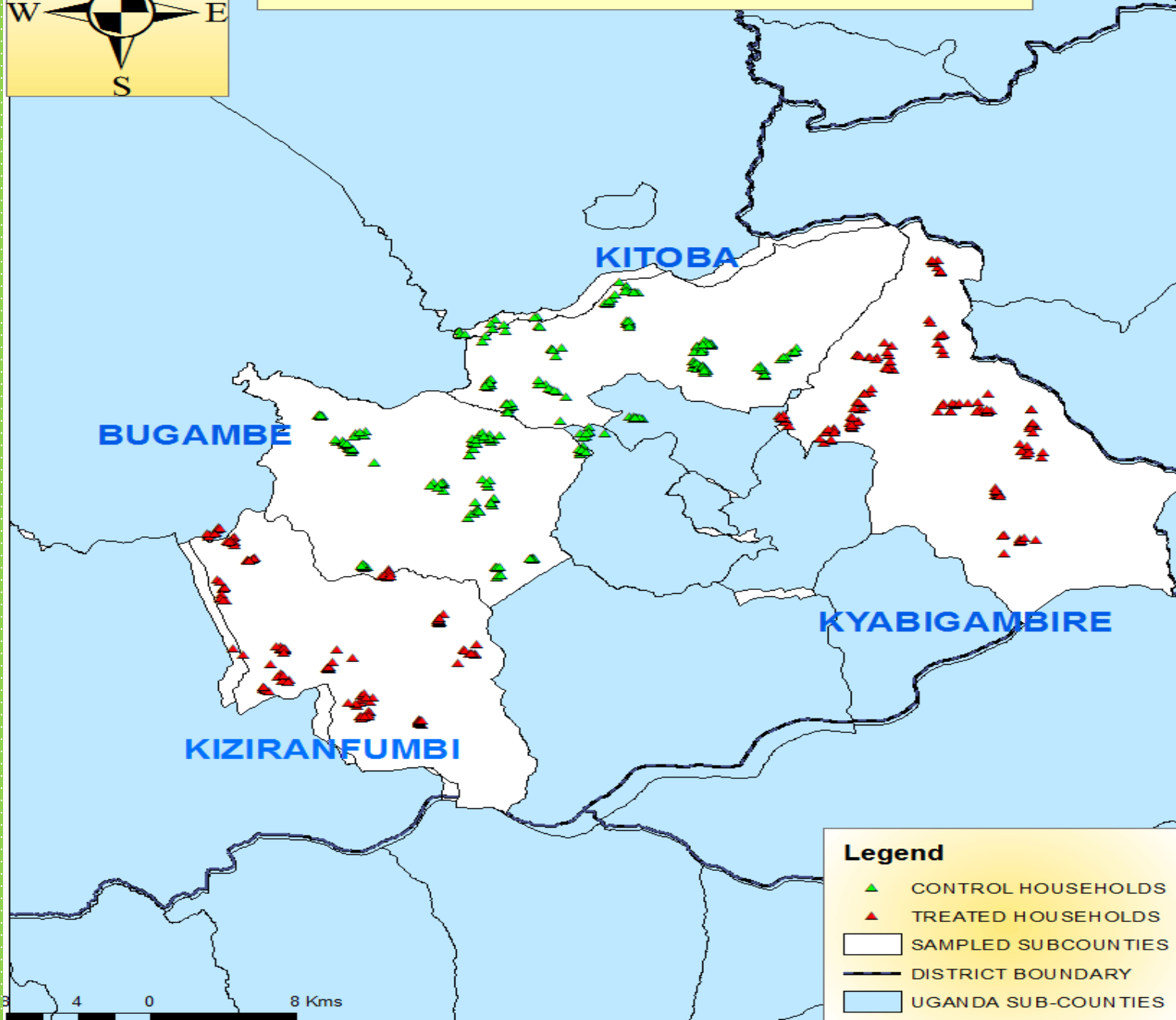
HOIMA DISTRICT



Legend

- ▲ TREATED HOUSEHOLDS
- SAMPLED SUBCOUNTIES
- DISTRICT BOUNDARY
- UGANDA SUB-COUNTIES

HOIMA DISTRICT

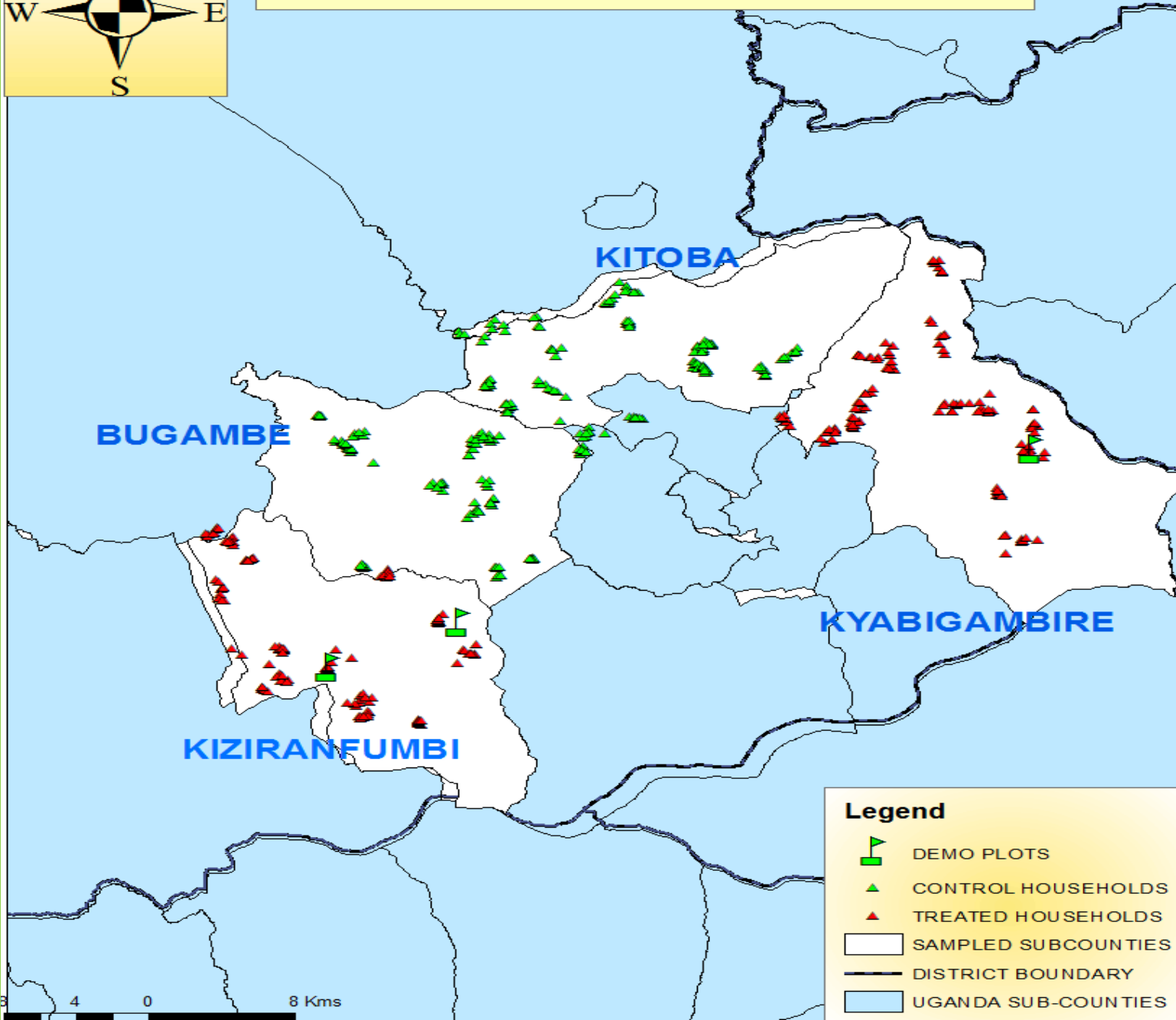
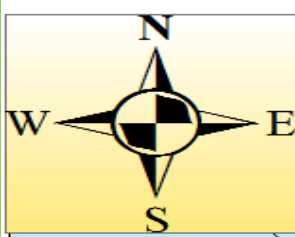


Legend



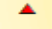


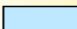
- ▲ CONTROL HOUSEHOLDS
- ▲ TREATED HOUSEHOLDS
- SAMPLED SUBCOUNTIES
- DISTRICT BOUNDARY
- UGANDA SUB-COUNTIES

0 4 8 Kms

HOIMA DISTRICT

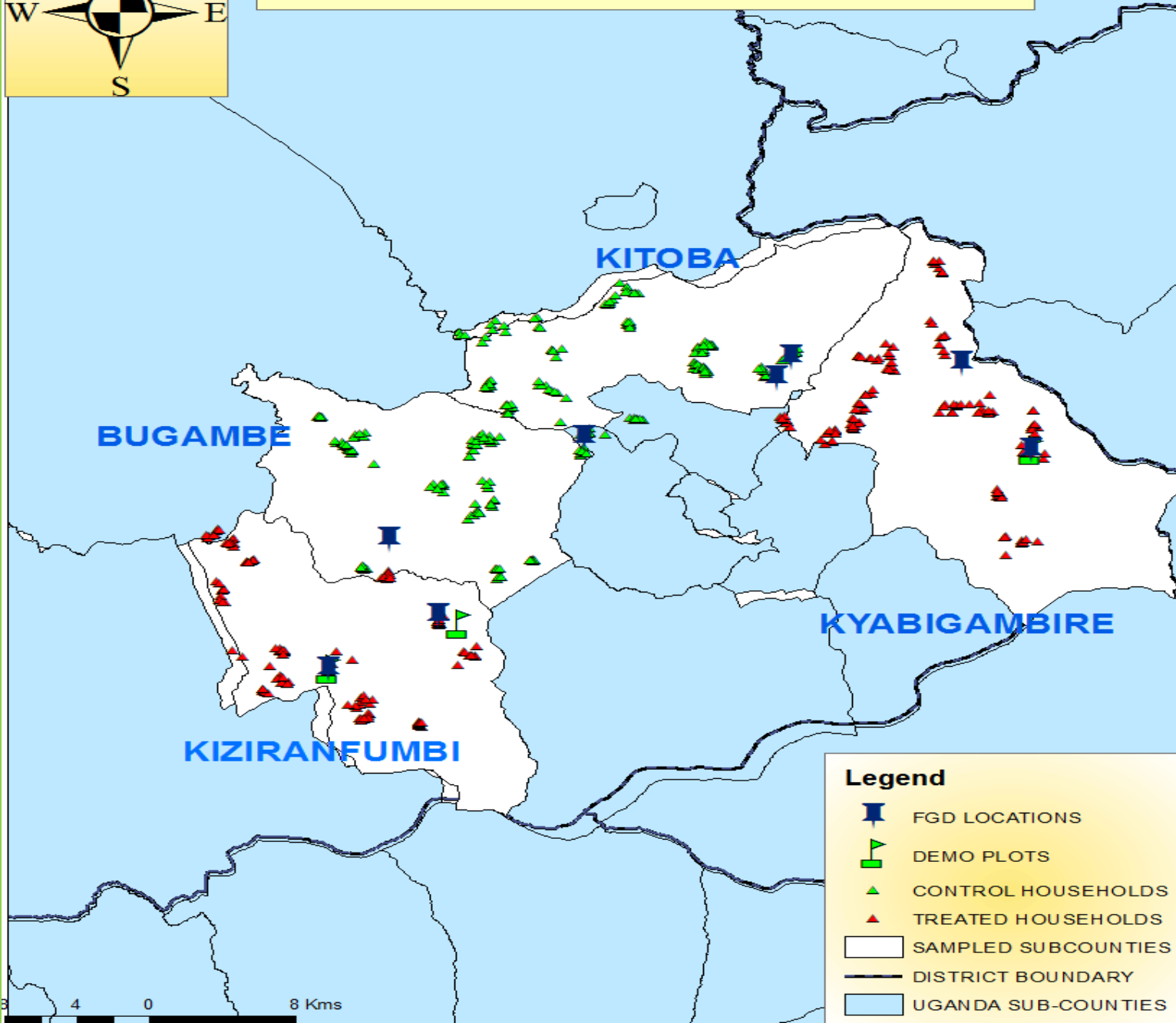


Legend

-  DEMO PLOTS
-  CONTROL HOUSEHOLDS
-  TREATED HOUSEHOLDS
-  SAMPLED SUBCOUNTIES
-  DISTRICT BOUNDARY
-  UGANDA SUB-COUNTIES

0 4 8 Kms

HOIMA DISTRICT

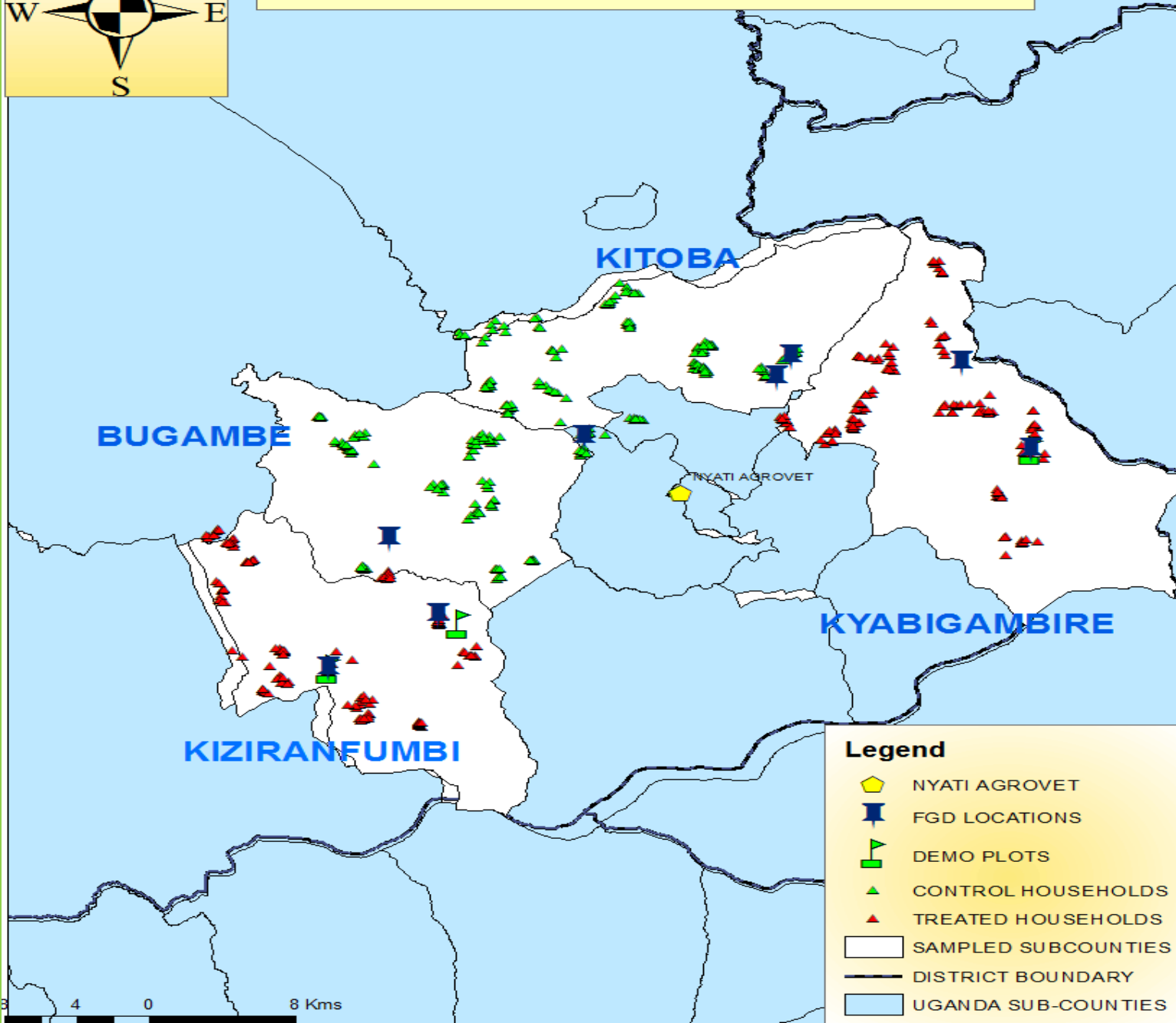


Legend





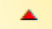


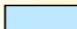
-  FGD LOCATIONS
-  DEMO PLOTS
-  CONTROL HOUSEHOLDS
-  TREATED HOUSEHOLDS
-  SAMPLED SUBCOUNTIES
-  DISTRICT BOUNDARY
-  UGANDA SUB-COUNTIES

0 4 8 Kms

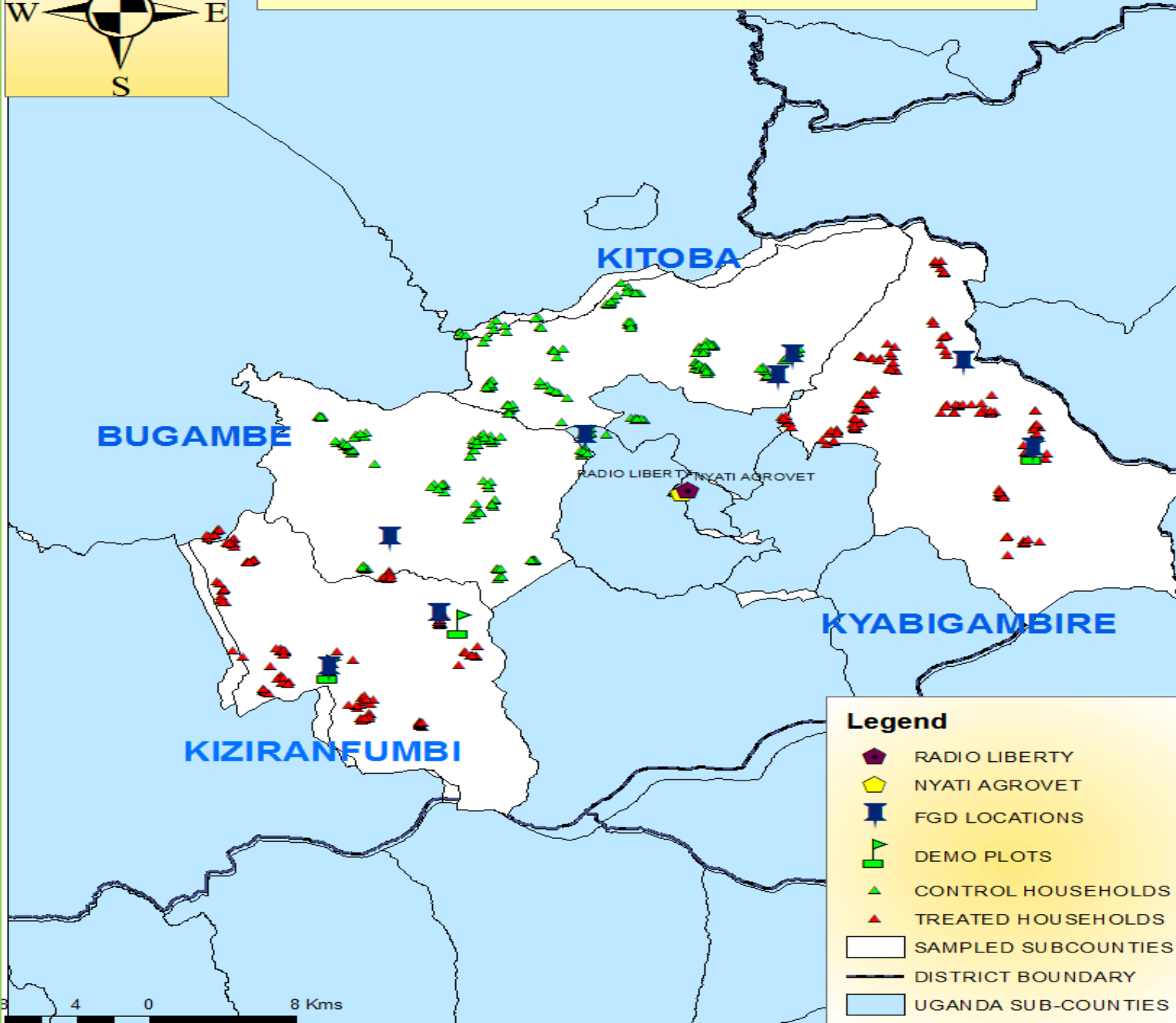
HOIMA DISTRICT






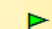
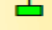
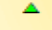
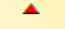


Legend

-  NYATI AGROVET
-  FGD LOCATIONS
-  DEMO PLOTS
-  CONTROL HOUSEHOLDS
-  TREATED HOUSEHOLDS
-  SAMPLED SUBCOUNTIES
-  DISTRICT BOUNDARY
-  UGANDA SUB-COUNTIES

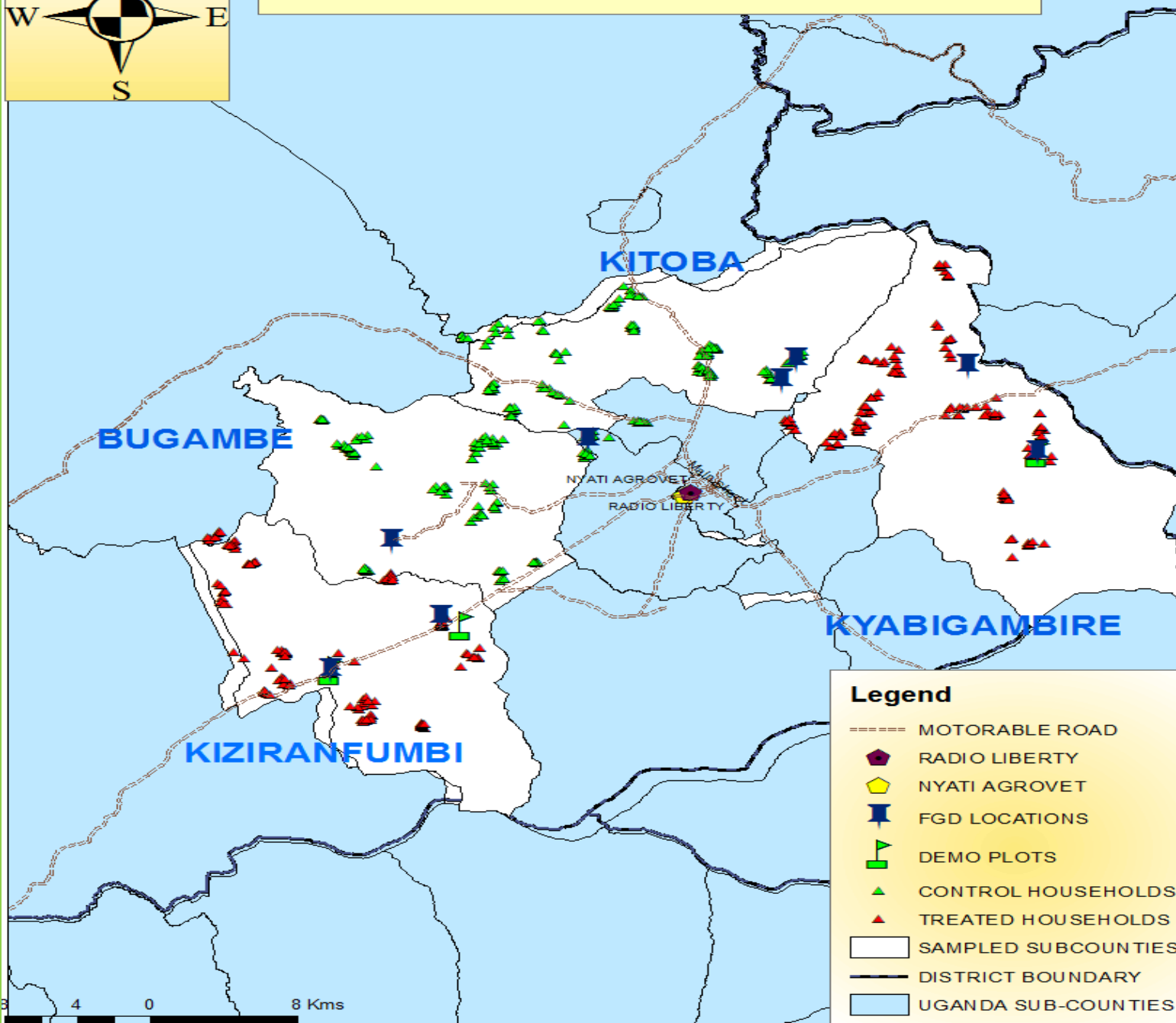
HOIMA DISTRICT



Legend

-  RADIO LIBERTY
-  NYATI AGROVET
-  FGD LOCATIONS
-  DEMO PLOTS
-  CONTROL HOUSEHOLDS
-  TREATED HOUSEHOLDS
-  SAMPLED SUBCOUNTIES
-  DISTRICT BOUNDARY
-  UGANDA SUB-COUNTIES

HOIMA DISTRICT



Legend

- MOTORABLE ROAD
- RADIO LIBERTY
- NYATI AGROVET
- FGD LOCATIONS
- DEMO PLOTS
- CONTROL HOUSEHOLDS
- TREATED HOUSEHOLDS
- SAMPLED SUBCOUNTIES
- DISTRICT BOUNDARY
- UGANDA SUB-COUNTIES

Distance (km) from farthest farmer using Motorable road to:

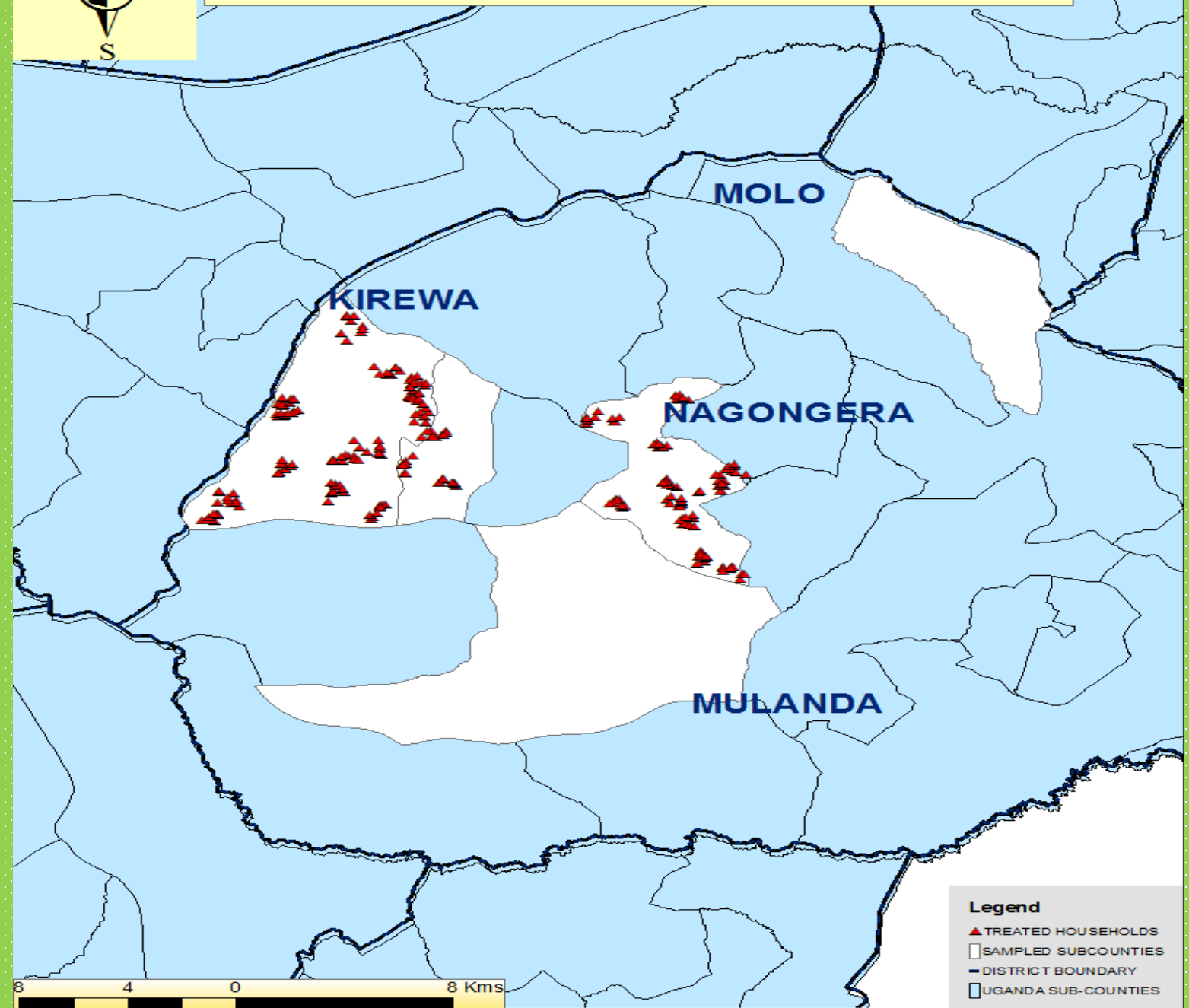
Demoplot:

1. Kitoba= 24.79
2. Kyabigambire= 17.66
3. Bugambe= 24.97
4. Kiziranfumbi= 16.54

Agrodealer:

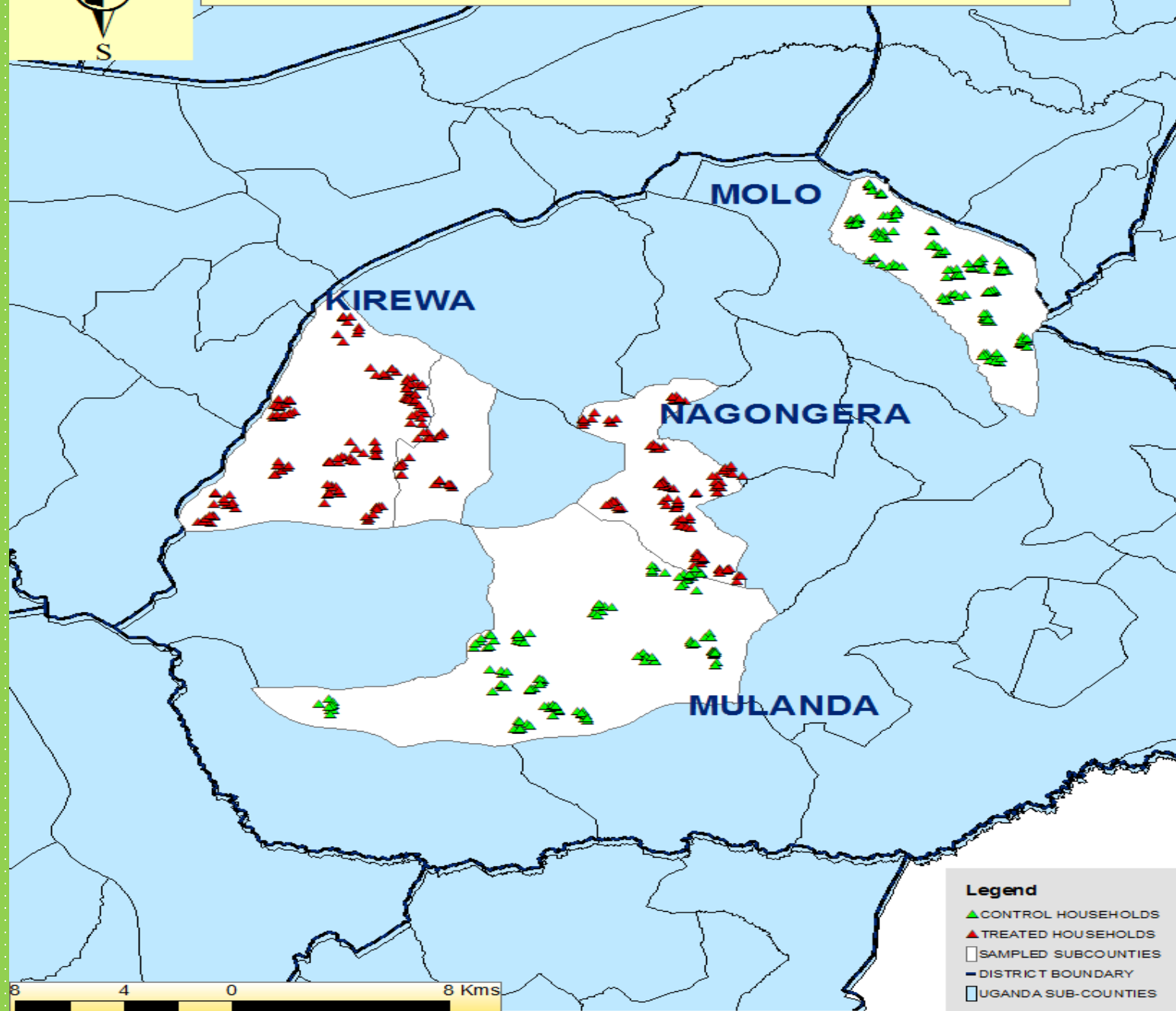
1. Kitoba= 23.26
2. Kyabigambire= 24.50
3. Bugambe= 24.91
4. Kiziranfumbi= 32.81

TORORO DISTRICT

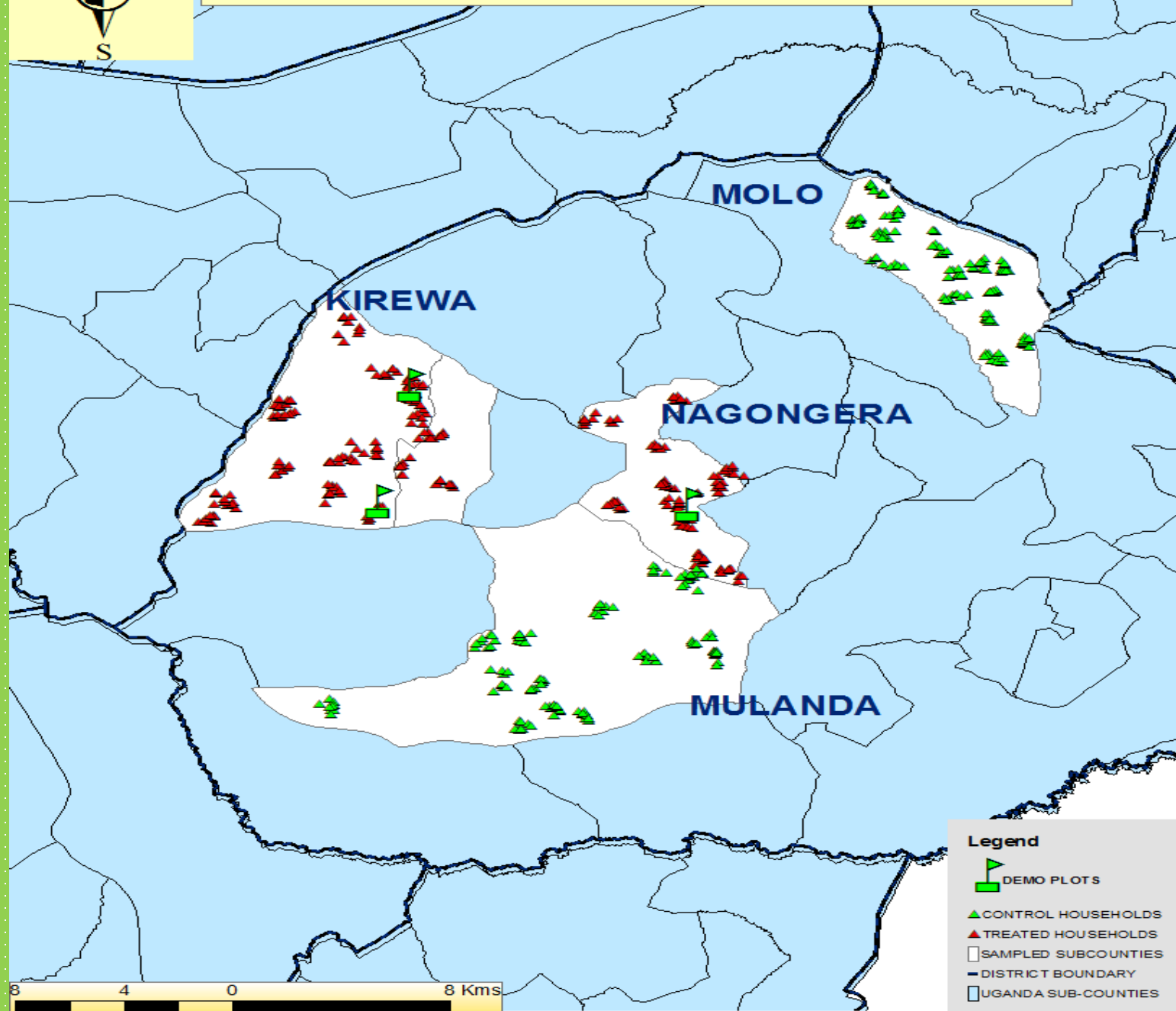


8 4 0 8 Kms

TORORO DISTRICT



TORORO DISTRICT

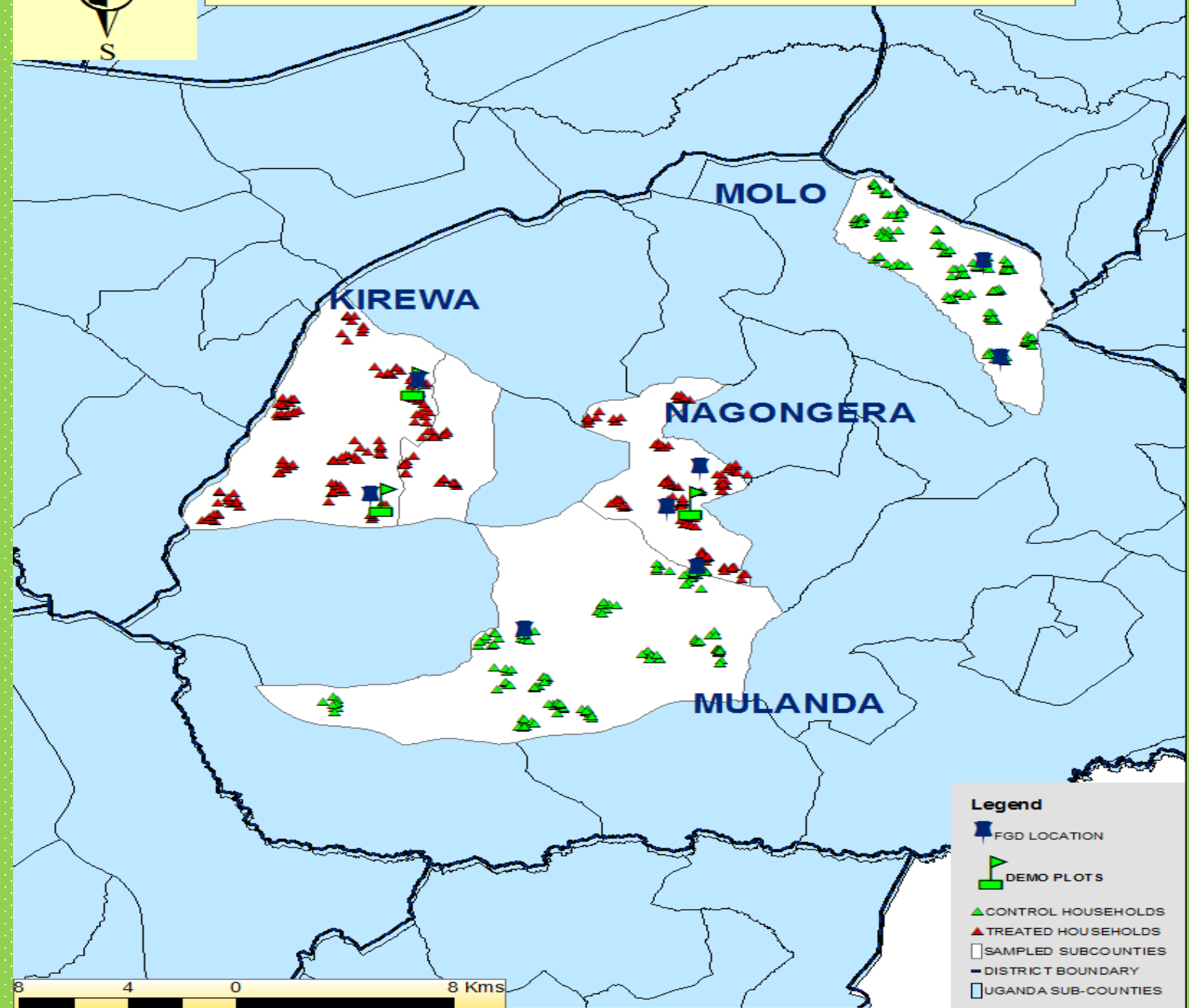


Legend

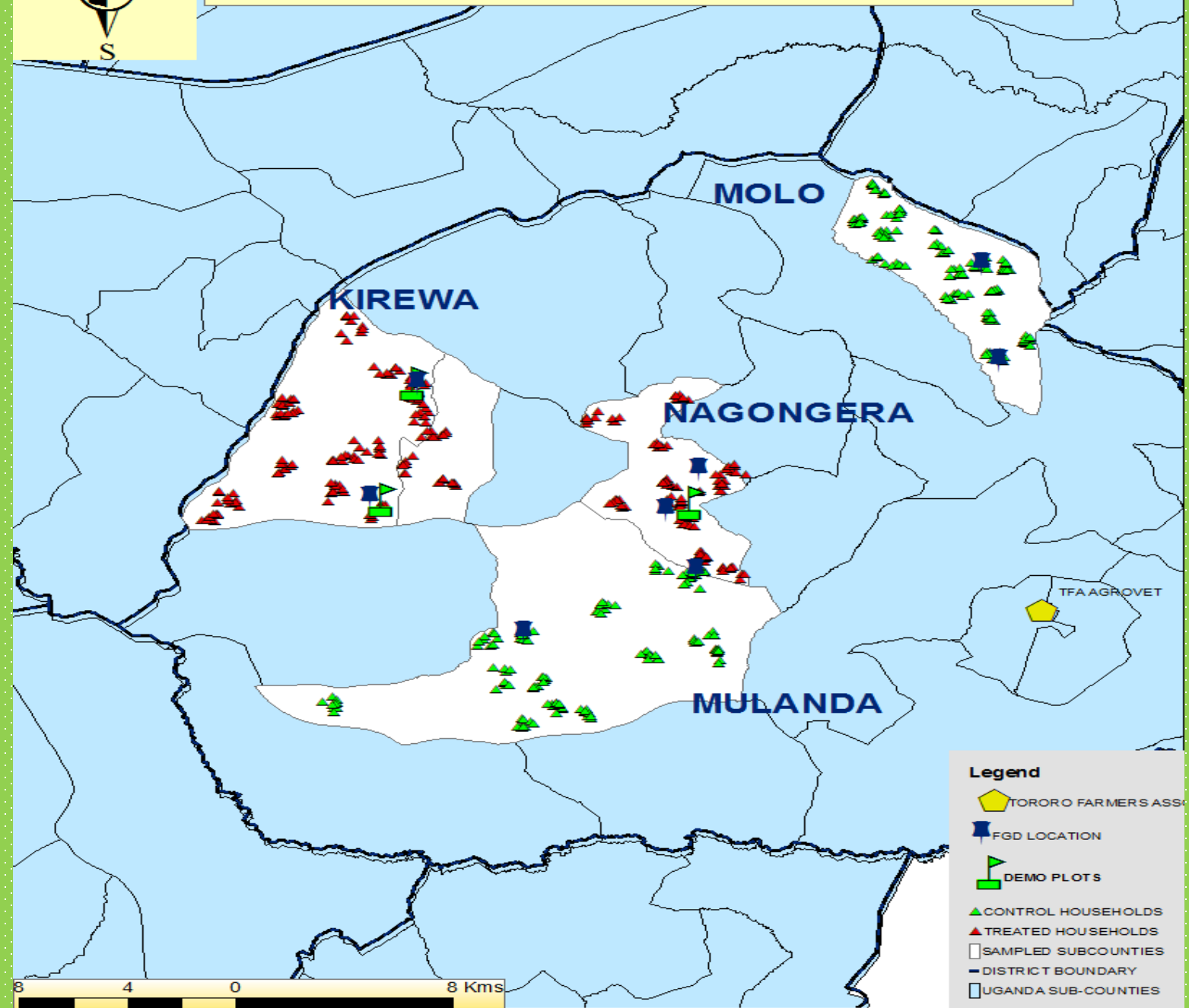
- DEMO PLOTS
- CONTROL HOUSEHOLDS
- TREATED HOUSEHOLDS
- SAMPLED SUBCOUNTIES
- DISTRICT BOUNDARY
- UGANDA SUB-COUNTIES

8 4 0 8 Kms

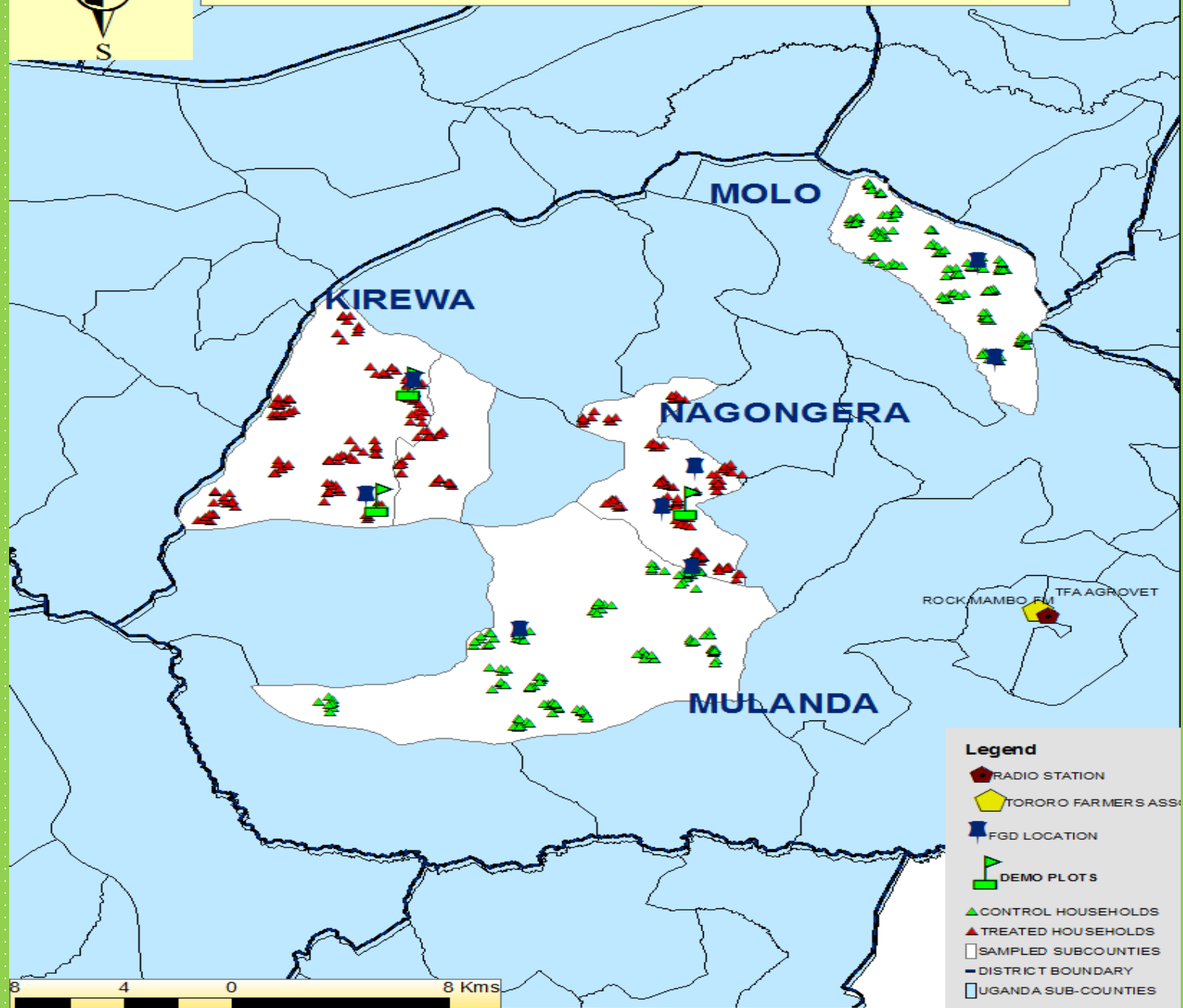
TORORO DISTRICT



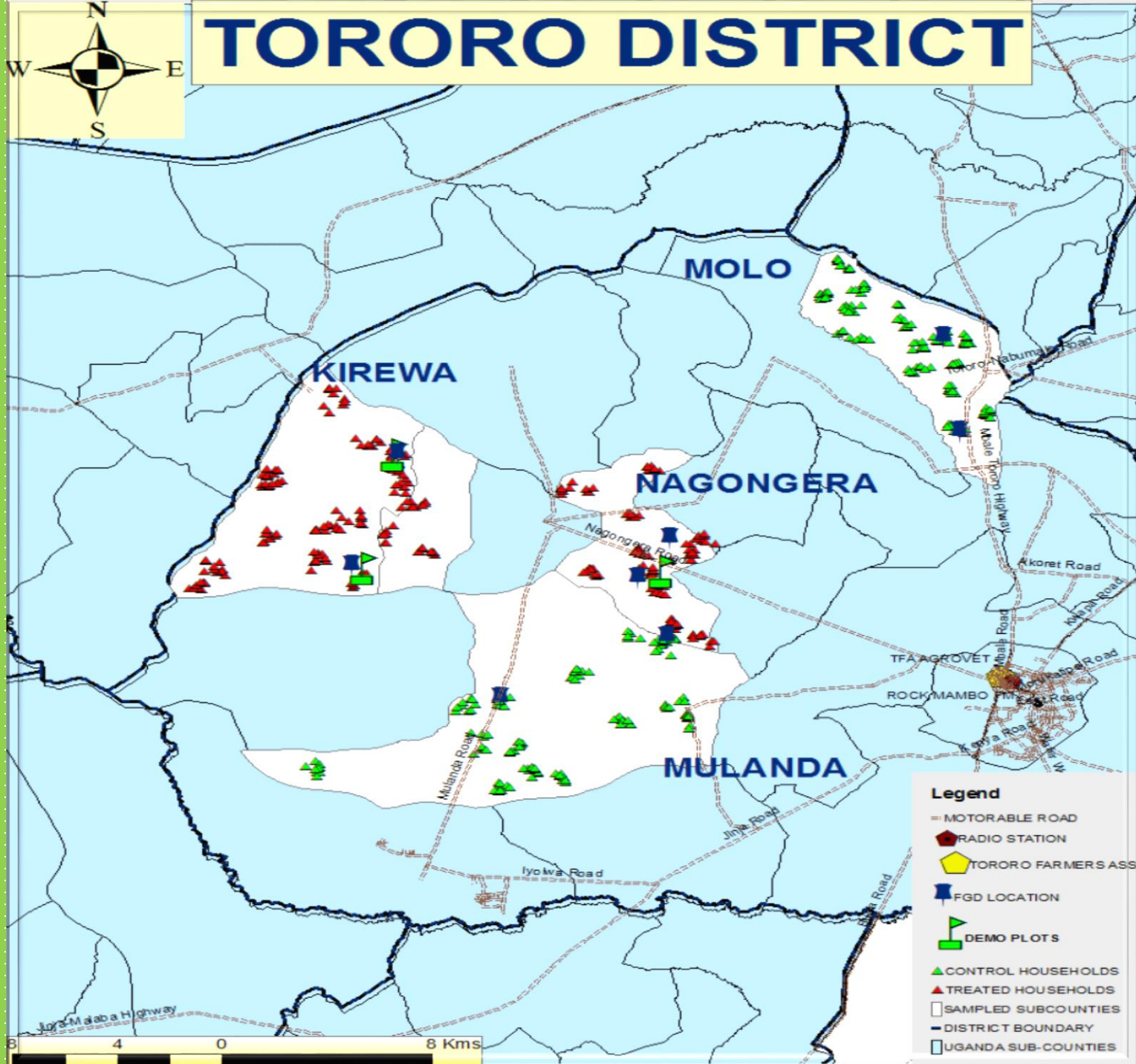
TORORO DISTRICT



TORORO DISTRICT



TORORO DISTRICT



Distance (km) from farthest farmer using Motorable road to:

- Demoplot:
1. Molo= 19.20
 2. Nagongera= 6.80
 3. Mulanda= 27.11
 4. Kirewa= 7.0
- Agrodealer:
1. Molo= 25.15
 2. Nagongera= 20.47
 3. Mulanda= 41.20
 4. Kirewa= 32.0